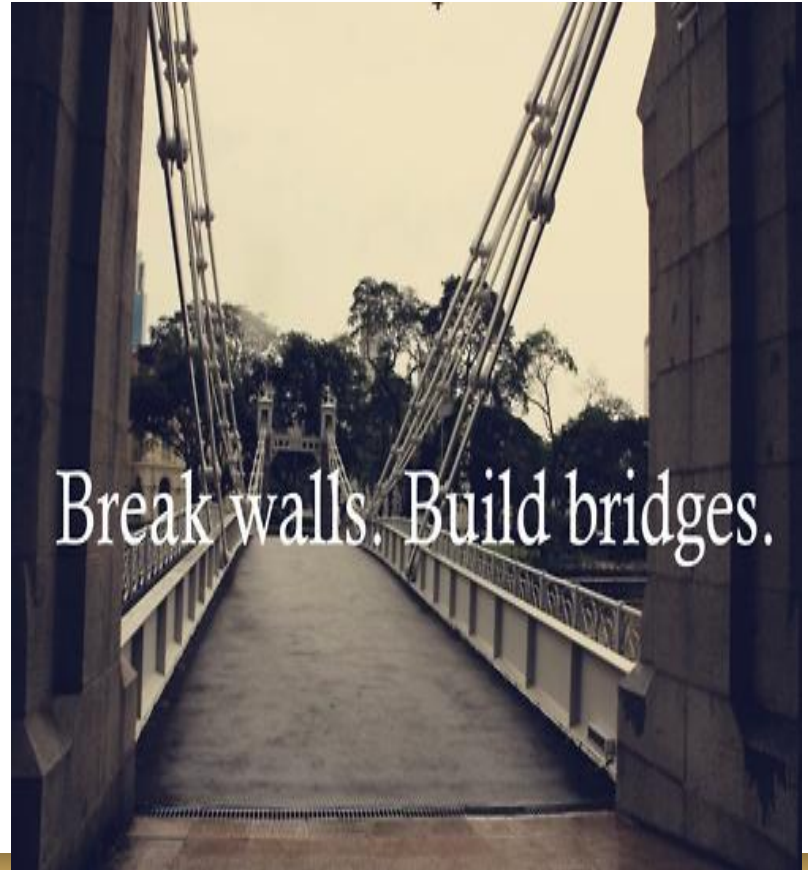


# Breaking down barriers to build success

Eliminating the school-to-prison pipeline

**Kelisa J. Wing, 2017 DoDEA Teacher of the Year**  
**@kelisa\_l2teach**



# What is the school to prison pipeline?

<https://www.youtube.com/watch?v=cekz4GmZ18o>

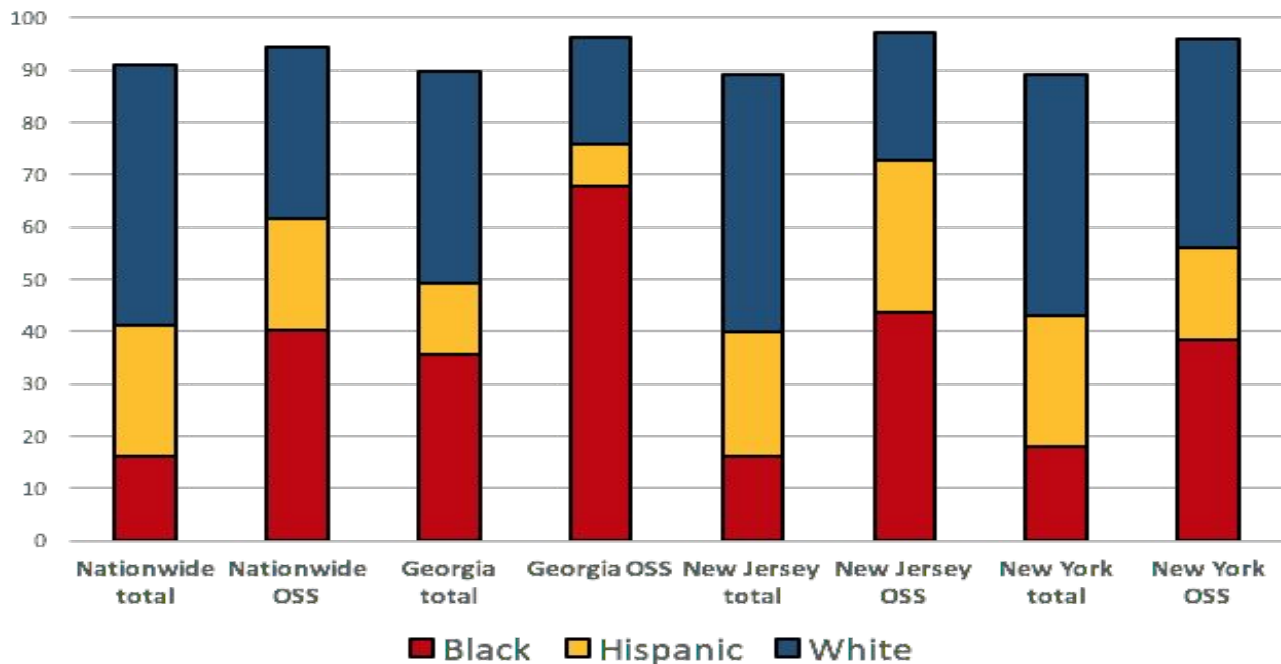
**Black and Latino students 3xs expelled and 4xs suspended**

**99% of students arrested in NYC were Black and Latino**

**Willful Defiance:  
dress code, taking candy  
from teachers, doodling on a desk**



# Visualizing the disparity



# Why should we care?



# MINOR INFRACTIONS

## BREAKING DOWN THE SCHOOL TO PRISON PIPELINE



### THE SYSTEM



ANNUAL COST PER YOUTH TO EDUCATE VS. INCARCERATE

**PRISON FUNDING**  
 HAS INCREASED  
**530% MORE**  
 THAN  
 EDUCATION FUNDING  
 OVER THE PAST 20 YEARS



**EDUCATION POLICY**  
 WAR ON DRUGS  
 ZERO TOLERANCE  
 TEACH TO THE TEST  
 NO CHILD LEFT BEHIND

POLICIES ENABLE THE  
**CRIMINALIZATION**  
 OF LOW PERFORMING  
**STUDENTS**



38% INCREASE IN SCHOOL SECURITY

69% DECREASE

IN VIOLENT CRIME

IN SCHOOLS



33% ARRESTED BY AGE 17

**STUDENTS ARE**  
**ARRESTED FOR**  
 NON-VIOLENT OFFENCES  
 AND MINOR INFRACTIONS

### THE YOUTH

YOUTH INCARCERATION BY RACE (CHICAGO 2007)



YOUTH ARRESTS BY AGE (CHICAGO 2002)



**YOUNG MEN OF COLOR**  
 ARE DISPROPORTIONATELY TARGETED



66% diagnosed with emotional or trauma disorders



45% have learning disabilities or need special education



70% are serving time for non-violent offenses



70% diagnosed with drug dependence



26% have tried or considered committing suicide

STRUGGLING YOUTH  
**DESERVE**  
**SUPPORT**  
 NOT IMPRISONMENT

### THE CYCLE

**AFTER RELEASE**  
 57% RE-ENROLL  
 IN SCHOOL

70% DROP OUT WITHIN ONE YEAR



50% RE-INCARCERATED WITHIN 3 YEARS



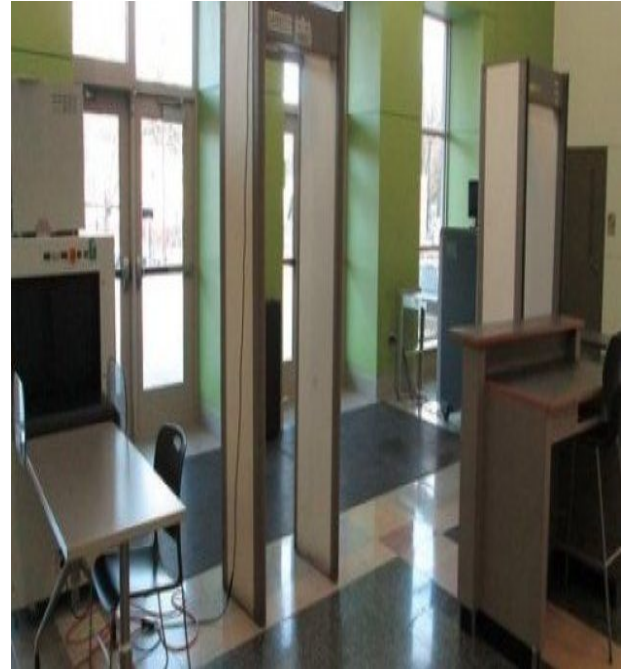
5% GRADUATE HIGH SCHOOL OR EARLIER

**THE CRIMINALIZATION AND**  
**INCARCERATION OF YOUTH**  
 DIMINISHES OPPORTUNITIES,  
 DISRUPTS COMMUNITIES, AND  
 PERPETUATES A CYCLE OF  
**RACIAL AND ECONOMIC**  
**INJUSTICE**

# Long term effects

**Students who are suspended are 3xs more likely to end up in a juvenile detention center**

**Students who have been in a detention center are 67% more likely to be in jail before their 25th birthday**



# How can we address this problem?

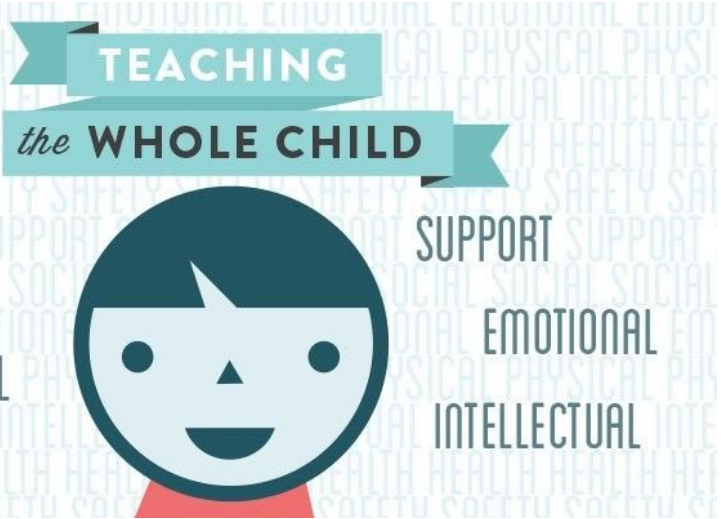
1. Teach to the whole child
2. Develop your cultural competency
3. Student-centered instruction
4. Identify your Implicit/ Explicit Biases
5. Adopt Restorative justice practices

“Alone we  
can do so  
little; together  
we can do  
so much.”

Helen Keller



# Teach to the Whole Child



Discuss and chart...

Find a friend...Discuss the resource...



# Develop your cultural competency

## Developing cultural competence



**Eliminate Cultural deficit thinking - holding lower expectations for students with demographics that do not fit the traditional context of the school system.**

<http://guide.culturecrossing.net/>

# Student Centered Instruction

**Turn/ Talk - how do you teach, plan and differentiate for your students??**

# Identify your implicit/ explicit biases?

## Implicit Bias is...

**Attitudes, Stereotypes & Beliefs**  
that can affect how we treat others



Race



Ability



Gender



Culture



Language

Implicit bias runs contrary to our stated beliefs. We can say that we believe in equity (and truly believe it). But then unintentionally behave in ways that are biased and discriminatory.

# Go from punishment to development...

## Restorative justice

**Praise students**

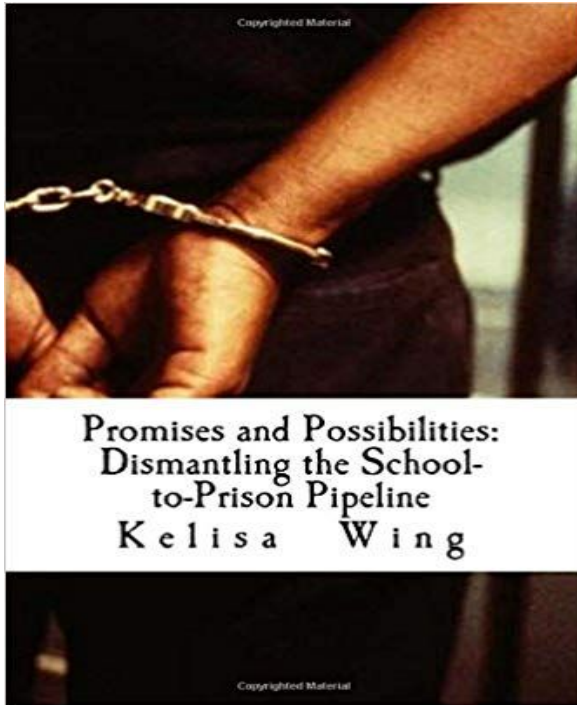
**Set High expectations**

**Adopt positive intervention strategies**

**Commit to not criminalize behavior**



Questions???? Feel free to ask...



**Book available today**

**\*Also available on Amazon: Print/ Kindle**