



Shifting Gears

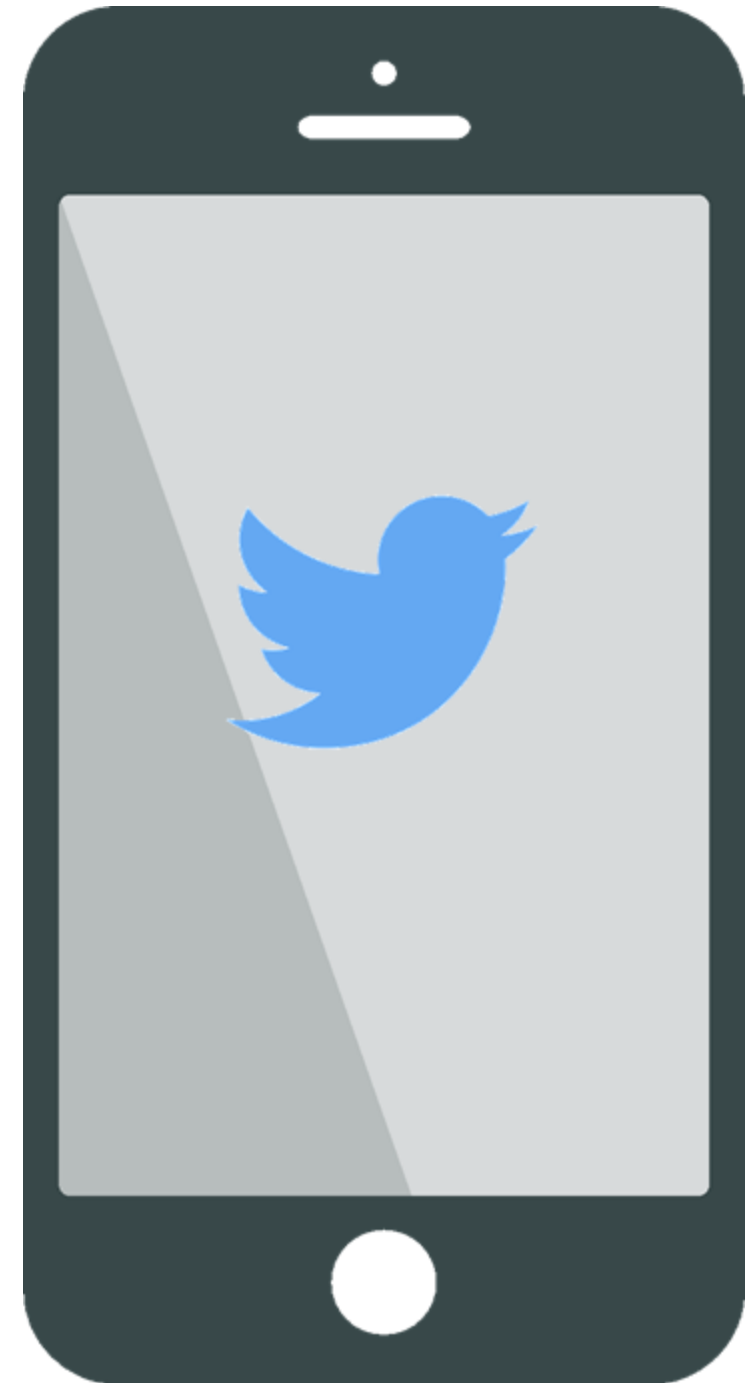
Teacher to Teacher Leader



Three critical vehicles

- Policy
- Practice
- Advocacy

Great teaching to strengthen student learning.



JOIN THE CONVERSATION

#teachersleading

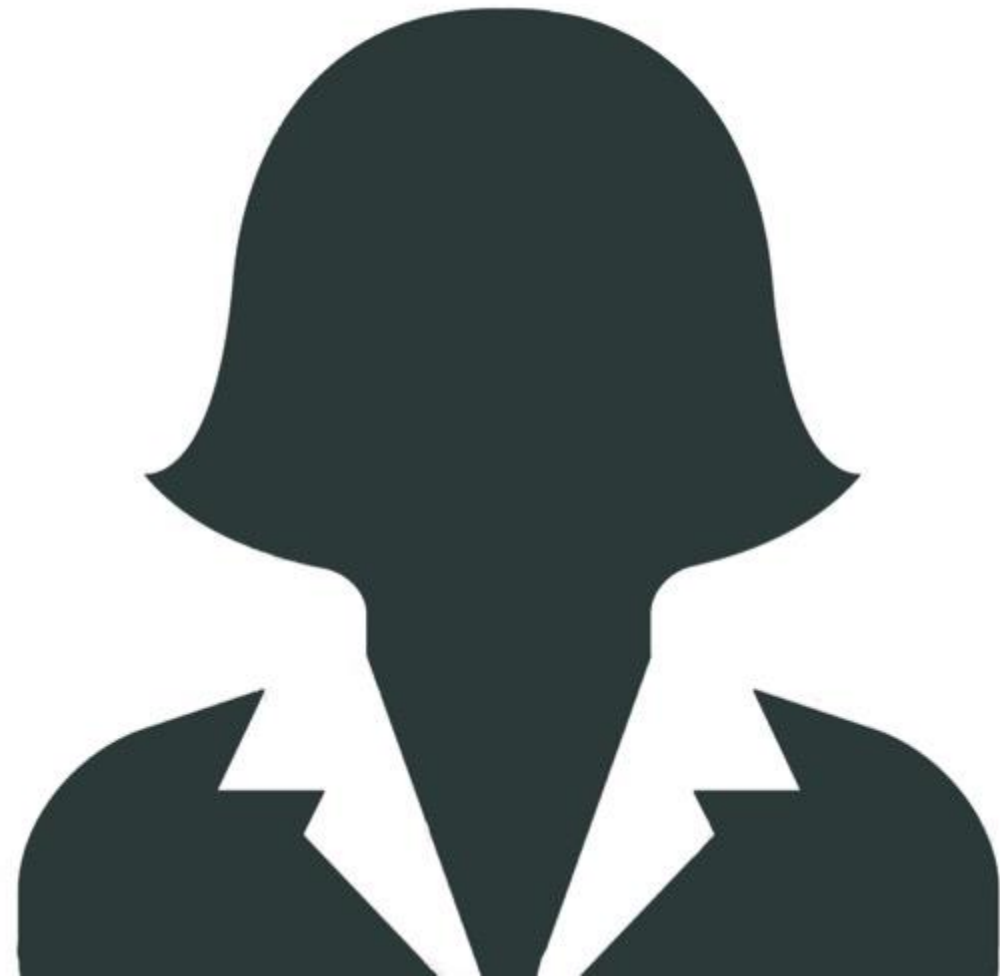
@nnstoy

#LFNJ17

@MichaelJDunlea

EXPECTATIONS

- Gain a deeper understanding of the intentional shifts needed moving from teacher to teacher leader
- Provide opportunities for you to expand your network



LEADERSHIP
HOW DO WE DEFINE IT?





Who are your leadership role models?



Who are your leadership role models?



Introduce Yourself

Share: How do you define leadership?

(one minute each)



WHAT IS LEADERSHIP?

“...bringing people together in pursuit of a common cause, developing a plan to achieve it, and staying with it until the goal is achieved.”



PRESIDENT BILL CLINTON

WHAT IS LEADERSHIP?

“The litmus test of all leadership is whether it mobilizes people’s commitment to putting their energy into actions designed to improve things. It is individual commitment, but above all it is collective mobilization.”



MICHAEL FULLAN
Leading in a Culture of Change, p. 9

WHAT IS LEADERSHIP?

“Teacher leadership is the process by which teachers, individually or collectively, influence their colleagues, principals, and other members of the school community to improve teaching and learning practices with the aim of increased student learning and achievement”



JENNIFER YORK BARR



<http://www.nnstoy.org/teacher-leader-model-standards/>

1

Domain I: Fostering a Collaborative Culture to Support Educator Development and Student Learning

2

Domain II: Accessing and Using Research to Improve Practice and Student Outcomes

3

Domain III: Promoting Professional Learning for Continuous Improvement

4

Domain IV: Facilitating Improvements in Instruction and Student Learning

5

Domain V: Using Assessments and Data for Systemic Improvement

6

Domain VI: Improving Outreach and Collaboration with Families and Community

7

Domain VII: Advocating for Student Learning and the Profession



Shifting Gears. *Teacher to Teacher Leader.*

MAKING THE SHIFT

Working with *adults*

Think in terms of *'we' not 'I'*

Teachers grow their practice

Teacher Leaders support others in their professional growth

Focus on *facilitation and collaboration* with colleagues, administrators, community

ACTIVITY

- 1 Each participant receives one handout. *Policy *Advocacy *Instruction
- 2 Read
- 3 Meet with "like" shifts (colors)
- 4 Identify key ideas to share with others
- 5 Meet with another color – share learning
- 6 Repeat the process

Great Teachers

- Teachers of knowledge, skills, dispositions
- Aware of emerging practices
- Stay abreast of research
- Learn and grow
- Use data to inform learning
- Strong family/community relationships
- Teach effectively
- Undertake professional learning

Teacher Leaders

- Teach teachers to be stronger conveyers of K,S,D
- Forge emerging practices
- Produce and engage others in research
- Learn/grow and help colleagues to do same
- Facilitate data mining conversations
- Teach colleagues how to build/maintain relationships
- Model effective teaching
- Design and deliver professional learning

Great Teachers

- **Aware of policy**
- **Know policy makers**
- **Attend conferences and meetings around education policy**

Teacher Leaders

- **Shape and inform policy**
- **Engage with policy makers**
- **Present at or organize conferences**

How would you define the “shift” from teacher to teacher leader?

Great Teachers

- **Advocate for students**
- **May be engaged with associations or organizations**
- **Participate in learning about greater needs**
- **Support advocacy actions**

Teacher Leaders

- **Advocate for profession**
- **Shape or design advocacy action**
- **Mobilize others in advocacy**
- **Teach others to advocate for policies**

How would you define the “shift” from teacher to teacher leader?

DISCUSSION

To what extent have you experienced these shifts in thinking in your move from teacher to teacher leader?

02

How will you use this information to help you work with others?

01

How could you promote these shifts in others who wish to grow as teacher leaders?

03





Continue the conversation by liking *Teachers Leading* on Facebook. We want to hear from you.



If you have questions, comments, or are interested in bringing *Teachers Leading* to your school, please contact us at peggy@nnstoy.org



Learn more about *Teachers Leading* at www.nnstoy.org