

Preparing for Re-Opening: Creating an Instructional Plan

Webinar
June 25, 2020

If you can see the
slide and hear the
music, you are all set.

Welcome! We will begin shortly.

All attendees are muted upon entry.
Please use the chat feature for comments
and the Q&A feature for questions during the webinar.

Thank you for joining us



Tracy Crow

Panel moderator

Chief Strategy Officer

Learning Forward



Please introduce yourselves in the chat box

The webinar will be recorded and available.

All webinar registrants will receive a follow-up email that will include the webinar slide deck, recording, and other resources mentioned during the presentation.

- Your name
- Your location
- Your role in the educational sector



[@learningforward](https://twitter.com/@learningforward)

Weeks and months have passed



Yet we plan to go back to school and serve our students



What we'll talk about today

- Approaching planning with flexibility
- Determining where to start with instruction in the next school year
- Using instructional materials and assessments to support your plan
- The role of ongoing professional learning in supporting the plan's implementation

Check-in poll

- My district or school has developed a flexible plan for instruction this year.
(Strongly agree, Agree, No opinion, Disagree, Strongly disagree)
- My colleagues and I are prepared to maintain a clear instructional focus through the uncertainty of the coming school year.
(Strongly agree, Agree, No opinion, Disagree, Strongly disagree)

Panel discussion



Thomas Arnett

Senior Research Fellow

Education

Clayton Christensen
Institute



Jody Guarino

Mathematics

Coordinator

Orange County
Department of
Education



Aaron Bouie III

Principal

William Holmes McGuffey
Elementary School

Youngstown City
School District



Thomas Arnett
Senior Research Fellow
Education
Clayton Christensen
Institute
@ArnettTom



CHRISTENSEN
INSTITUTE



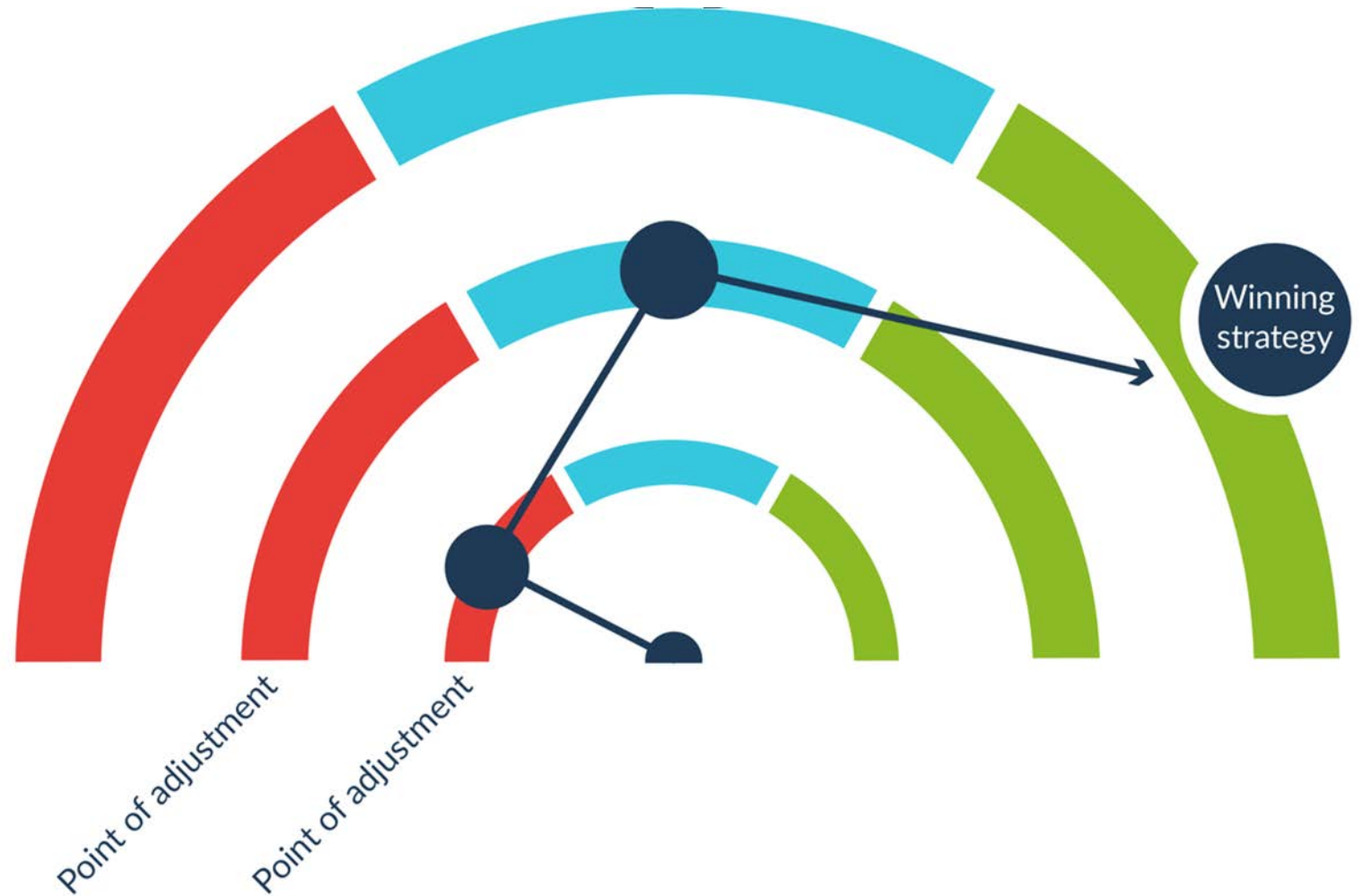
Theory behind discovery-driven growth

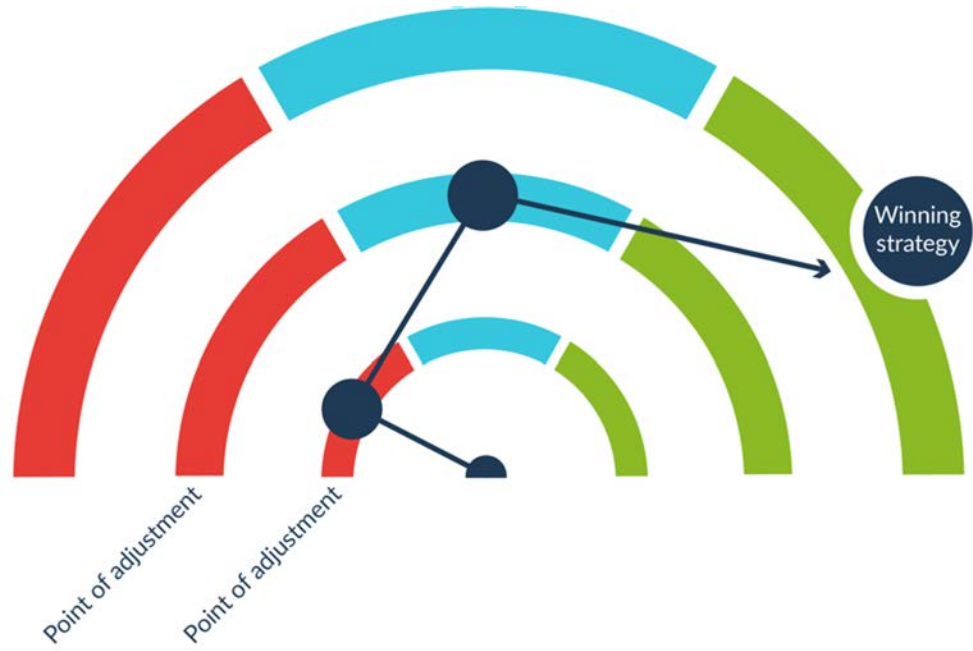
“For every one of our failures, we had spreadsheets that looked awesome.”
– Scott Cook, Intuit



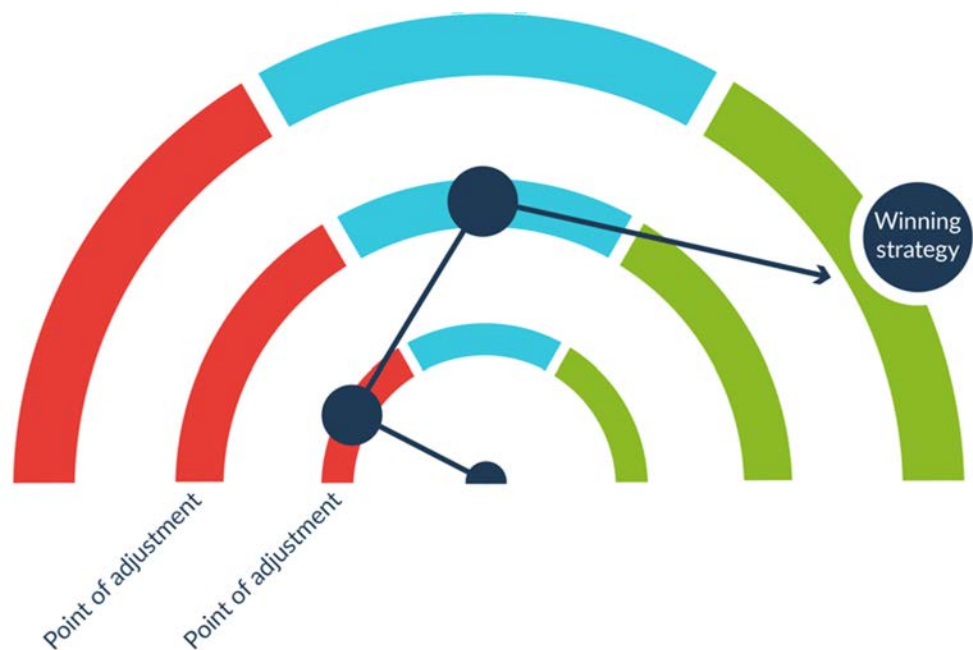
Theory behind discovery-driven growth

“For every one of our failures, we had spreadsheets that looked awesome.”
– Scott Cook, Intuit



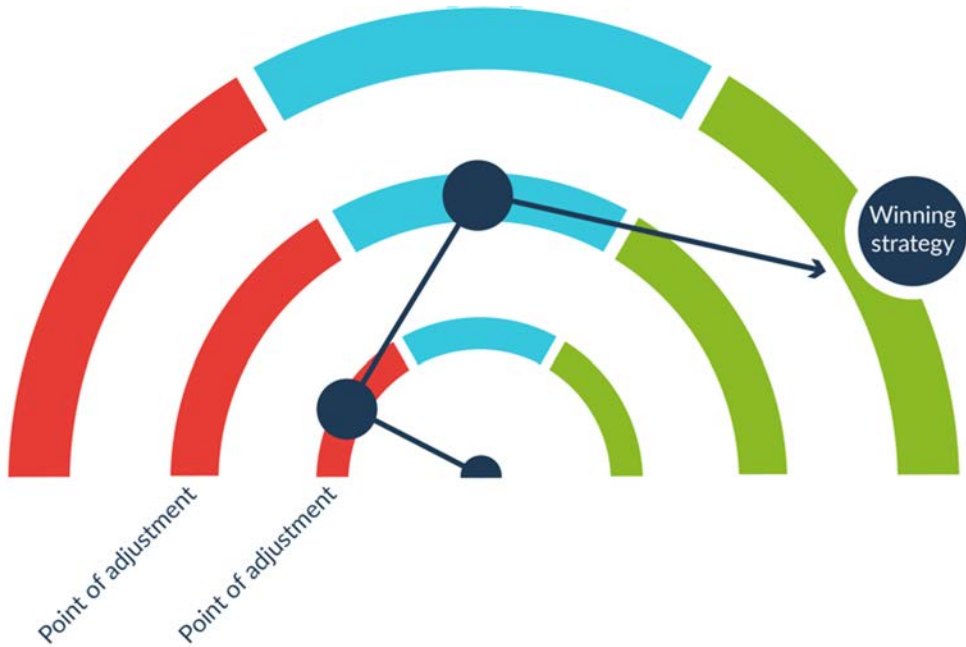


I. Develop Assumptions & Risks



1. Develop Assumptions & Risks

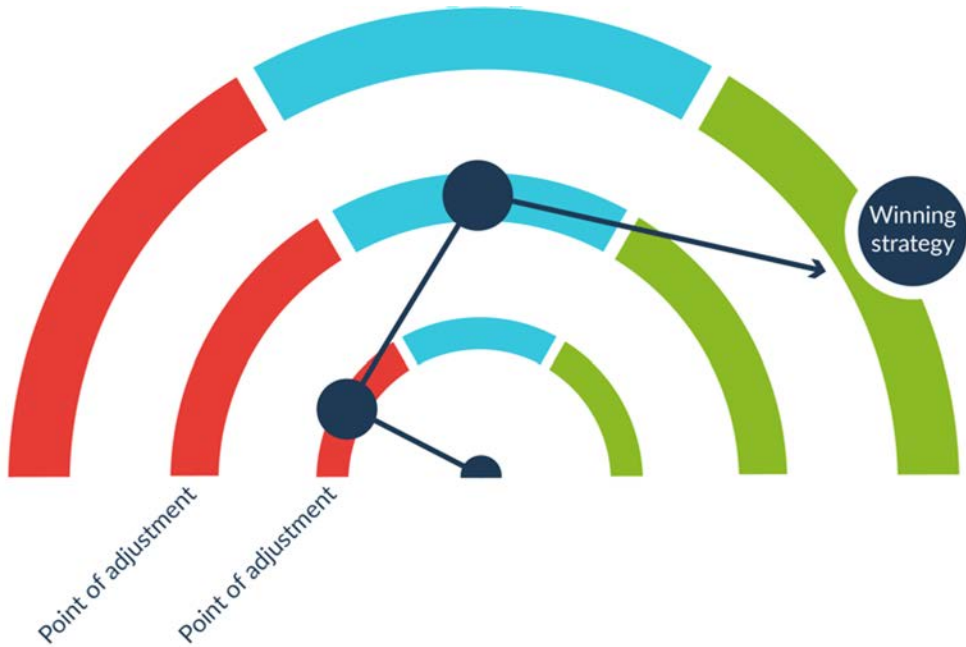
2. Identify Priority Areas



1. Develop Assumptions & Risks

2. Identify Priority Areas

3. Test and Learn

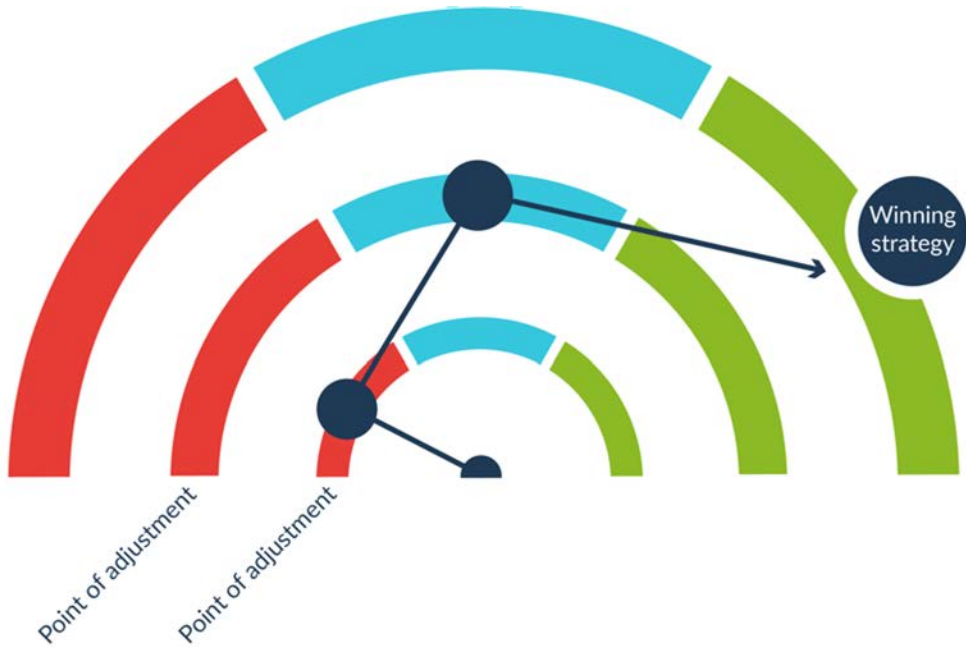


1. Develop Assumptions & Risks

2. Identify Priority Areas

3. Test and Learn

4. Absorb and re-direct





Orange County Department of Education

[About OCDE](#)

[Board](#)

[Departments](#)

[Employment](#)

[School Districts](#)



Jody Guarino

Mathematics
Coordinator

Orange County
Department of
Education

@jody_guarino



What can we help you find?

SEARCH



*Orange County students will lead the nation in
college and career readiness and success.*

Building on our learnings

- Relationships and connections
- Students at the center
- Teaching and learning for ALL students
- Stay true to who we are, what we believe, what we value



Opportunity to shift paradigms

Social Emotional Learning (of students and teachers)

- Attend to students (and teachers) as people, while at the same time, work on learning
- Create space for interpersonal connections and relationships
- Examine the systems and structures that impact SEL in unintended ways

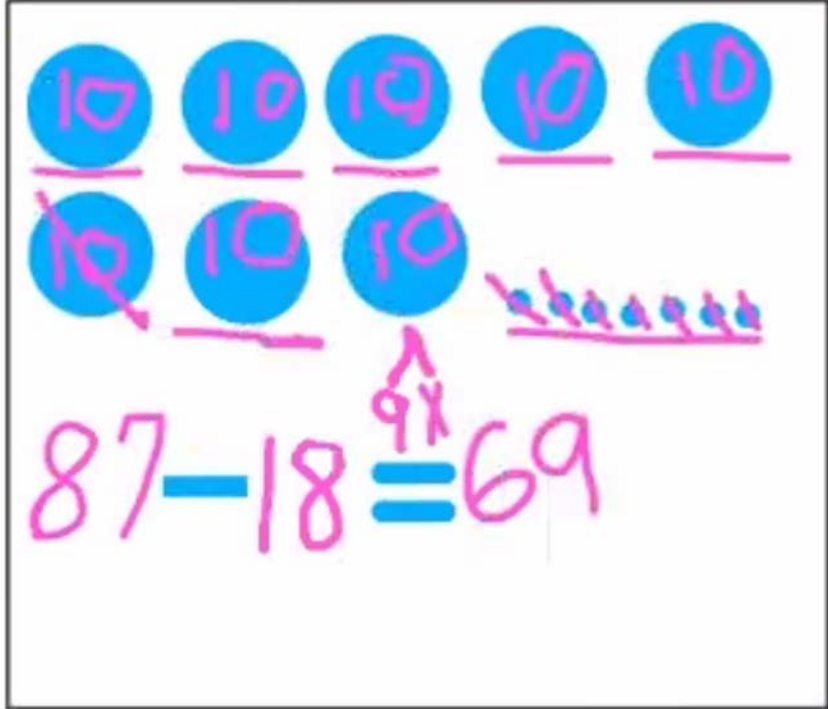


Opportunity to shift paradigms

Assessment

- Understand the details of student thinking from an “asset” lens
- Provide information to guide instructional decisions
- Utilize rich tasks to make student thinking visible and maximize instructional time

We bake 87 fudge brownies. A customer comes to our bakery and buys 18 fudge brownies. How many brownies do we have left?



87 - 18 = 69

We have 69 fudge brownies left.

What does this student understand?
What can we build upon?

Learning experiences to support the opportunities

What learning will be necessary to make some of these shifts?

- Who is learning?
- When?
- How?
- With what?

“I think the more we learn together, we can be more responsive to students. As we learn together, we can support each other more and learn from each other. We can have the same language and goals. And all this helps us to be more supportive and responsive to our students.”

Teacher, Rea Elementary School

Resources

Student Achievement Partners Math [Focus Documents](#)

Tools to identify critical math work by grade level

[Learning Together When You're Apart](#) *The Learning Professional*, June 2020

Article on learning together within COVID-19 experience



Aaron Bouie III

Principal
William Holmes McGuffey
Elementary School

Youngstown City
School District

[aaron.bouie@
youngstown.k12.oh.us](mailto:aaron.bouie@youngstown.k12.oh.us)

MCGUFFEY

ELEMENTARY

310 S. Schenley Ave, Youngstown, OH 44509
Phone 330-744-7999 | Fax 330-792-8051



Copyright 2020 The Business Journal, Youngstown, Ohio

Areas of Consideration

1. Planning for multiple scenarios
2. Social & Emotional Learning (SEL)
3. Instructional Quality
4. Evaluation, Support, Professional Development, & Collegiality



Planning for Multiple Scenarios

- a. Traditional (face to face)
- b. Blended (face to face & digital)
- c. Digital (Remote learning)



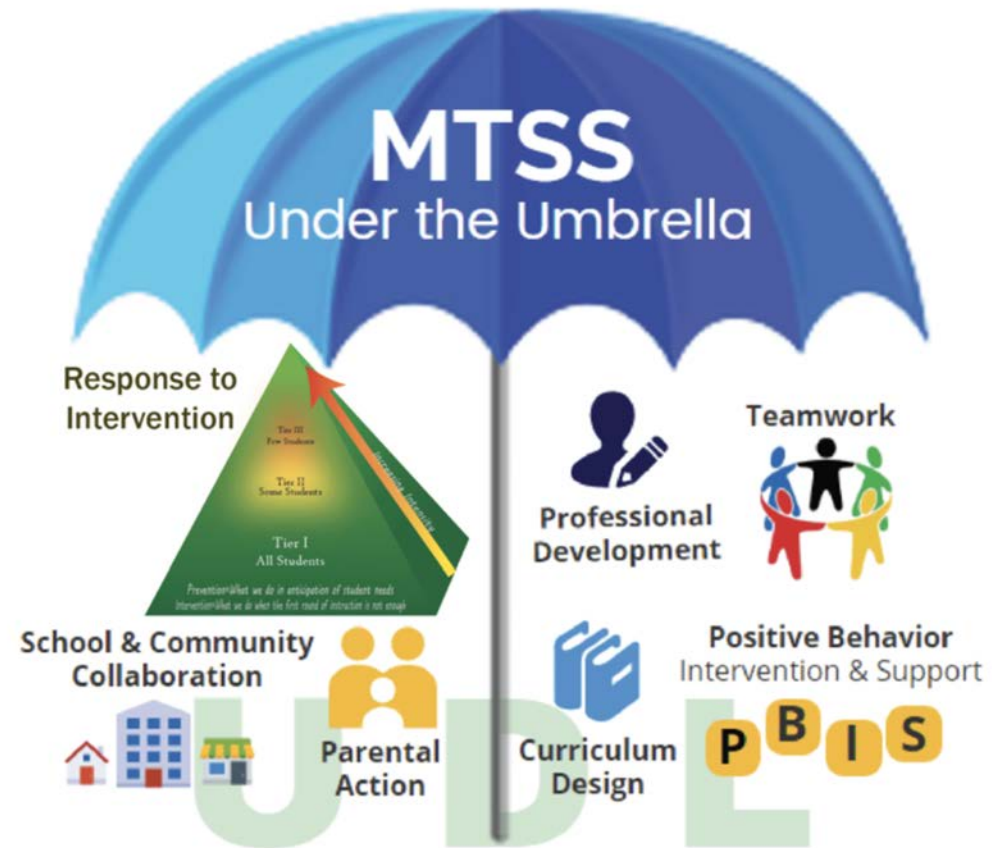
Social & Emotional Learning (SEL)

- a. Adjust to change
- b. Nurturing
- c. Preparing



Instructional Quality

- a. Core instruction
- b. Intervention
- c. Enrichment



The MTSS Umbrella

MTSS is often shown as an umbrella that includes a wide range of supports for students: academic, behavioral, social & emotional, language, and cultural.

Evaluation, Support, Professional Development, & Collegiality

- a. Contractual obligations
- b. Instructional programs
- c. Ongoing learning
- d. Relationships



Photography Credits:
<https://www.gettyimages.com/>
<https://images.google.com/>

Discussions and Questions



Mark your calendars

July 23

Educating for racial equity: Equipping oneself with anti-racist strategies

July 30

Welcoming your team to a new school year: Engaging *all* educators

Aug. 6

Re-opening schools: What does hybrid mean?

Aug. 13

Meeting the needs of our youngest learners

Aug. 20

Assessment approaches for today's learning environments

Aug. 27

Attending to the health and wellness of educators as the school year starts

Sept. 3

Connecting with families when it's more important than ever

Sept. 10

Plan C: Preparing for the next wave

Sept. 17

Learning from coaches: Supporting teams and individuals

- What online professional learning support or resources are most helpful to you right now?
- During this period of school closures or transition to online learning, what has your district or school done to help you as an educator?

Online resources

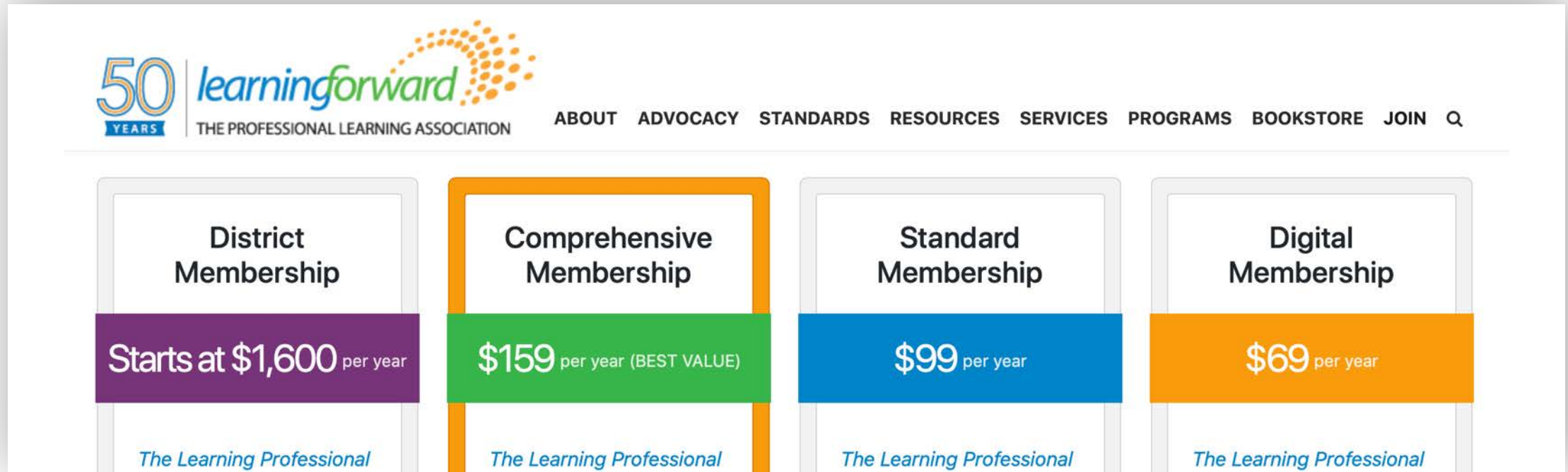
- Look for follow-up resources, including a recording of this webinar and slides
- Read latest issue of *The Learning Professional*
- Check out the Learning Forward blog
- Remember to check our COVID-19 online resource page and COVID-19 online community



Learning Forward memberships

- Get \$10 off any new Learning Forward membership
- Use coupon code **LFWebinars***
- **Visit** <http://learningforward.org/membership>

* Code valid for new members only



The screenshot displays the Learning Forward website's membership page. At the top left is the logo for the 50th anniversary of Learning Forward, with the text "50 YEARS" and "learningforward THE PROFESSIONAL LEARNING ASSOCIATION". To the right of the logo is a navigation menu with links for ABOUT, ADVOCACY, STANDARDS, RESOURCES, SERVICES, PROGRAMS, BOOKSTORE, JOIN, and a search icon. Below the navigation menu are four membership options presented in a grid:

Membership Type	Price	Additional Info
District Membership	Starts at \$1,600 per year	The Learning Professional
Comprehensive Membership	\$159 per year (BEST VALUE)	The Learning Professional
Standard Membership	\$99 per year	The Learning Professional
Digital Membership	\$69 per year	The Learning Professional

Thank you!

