


**Comprehensive
Professional Learning
System**

April 3, 2014

Facilitated by Joellen Killion and Karen Kidwell



Call Procedures

- Engage fully, sharing expertise and asking questions.
- Use the chat box at the bottom of the screen to enter comments and questions.

www.learningforward.org




MetLife Foundation

**BILL & MELINDA
GATES foundation**

www.learningforward.org


learningforward

Webinar Outcomes


- Develop an understanding of the conceptual and operational components of a comprehensive professional learning system.
- Examine the six critical policy elements of a comprehensive professional learning system.
- Identify strategies for assessing and revising the existing professional learning system to transform it.

www.learningforward.org

learningforward



Joellen Killion
Senior Advisor
Learning Forward



Karen Kidwell
Director, Program Standards
Kentucky Department of
Education

www.learningforward.org

learningforward

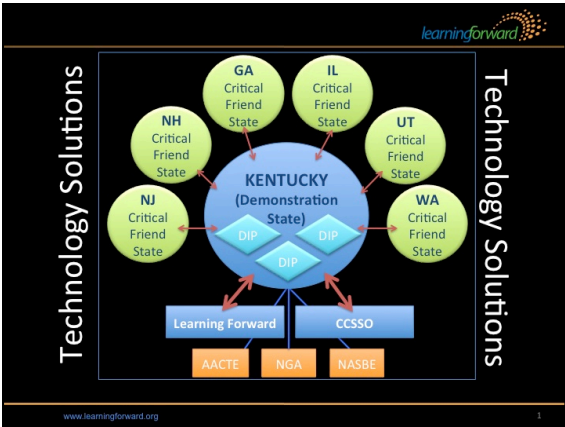
Agenda

Topic
• Welcome and introductions
• Overview of Transforming Professional Learning initiative
• Comprehensive professional learning system <ul style="list-style-type: none"> • Conceptual and operation components
• Key policy components
• Strategies for developing comprehensive professional learning system
• Wrap-up

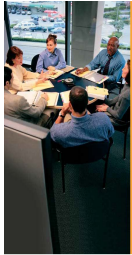
www.learningforward.org

The quality of an education system **cannot exceed** the quality of its teachers [educators].

How the Best Performing School Systems Come Out on Top, Barber and Mourshed, 2007



- ### Major Components
- State policy audit
 - Initiative audit
 - Finance audit
 - Comprehensive professional learning system
 - Third-party provider system
 - Technology solutions
 - District support
 - Resources for states and districts



COMPREHENSIVE PROFESSIONAL LEARNING SYSTEM: A WORKBOOK FOR STATES AND DISTRICTS

Comprehensive Professional Learning System: A Workbook for States and Districts

Available on Learning Forward's website

www.learningforward.org


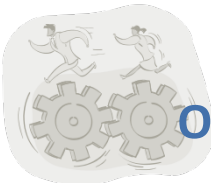
Comprehensive Professional Learning System

- **Infrastructure** for developing individual, school, team, school system capacities needed to ensure success for all educators and their students
- "The way professional learning works"
- **Component parts** of the engine that drives educator learning designed to increase student learning
- **Essential components** needed for professional learning to meet the demands of educators and their students (p. 5-6).

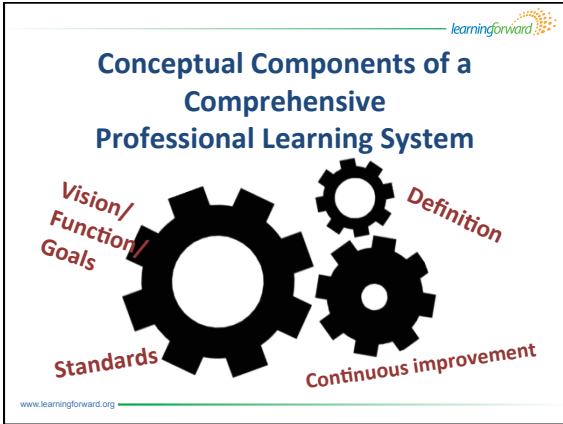
www.learningforward.org

Essential Components

Conceptual

Operational





learningforward

Poll

Now that you have had an overview of a comprehensive professional learning system, how closely does your current professional learning system align with the ideal comprehensive professional learning system?

?

www.learningforward.org

The slide contains the 'learningforward' logo in the top right corner, the title 'Poll' in the center, a paragraph of text, a large purple question mark icon at the bottom right, and the website URL 'www.learningforward.org' in the bottom left corner.

learningforward

Chat Your Thoughts

- In the chat box, list the components you consider your strongest. Label them **S** for strength, e.g. Standards for professional learning—**S**
- Identify those you consider missing. Label them **M** for missing, e.g., decision making--**M**.

www.learningforward.org

learningforward

Figure 1. Essential components of the comprehensive professional learning system

www.learningforward.org

learningforward

Kentucky's Comprehensive PL System

- Understand vision of "Unbridled Learning"
- Establish coherence across components/initiatives
- Engage Key Stakeholders in Task Force
- Review Policies
- Recommend key actions for PL system
- Prioritize and take action – key driving policy first
- Communicate and Advocate
- Develop guidance and support

www.learningforward.org



learningforward

Contact Information

Karen Kidwell: karen.kidwell@education.ky.gov

Joellen Killion: joellen.killion@learningforward.org

www.learningforward.org
