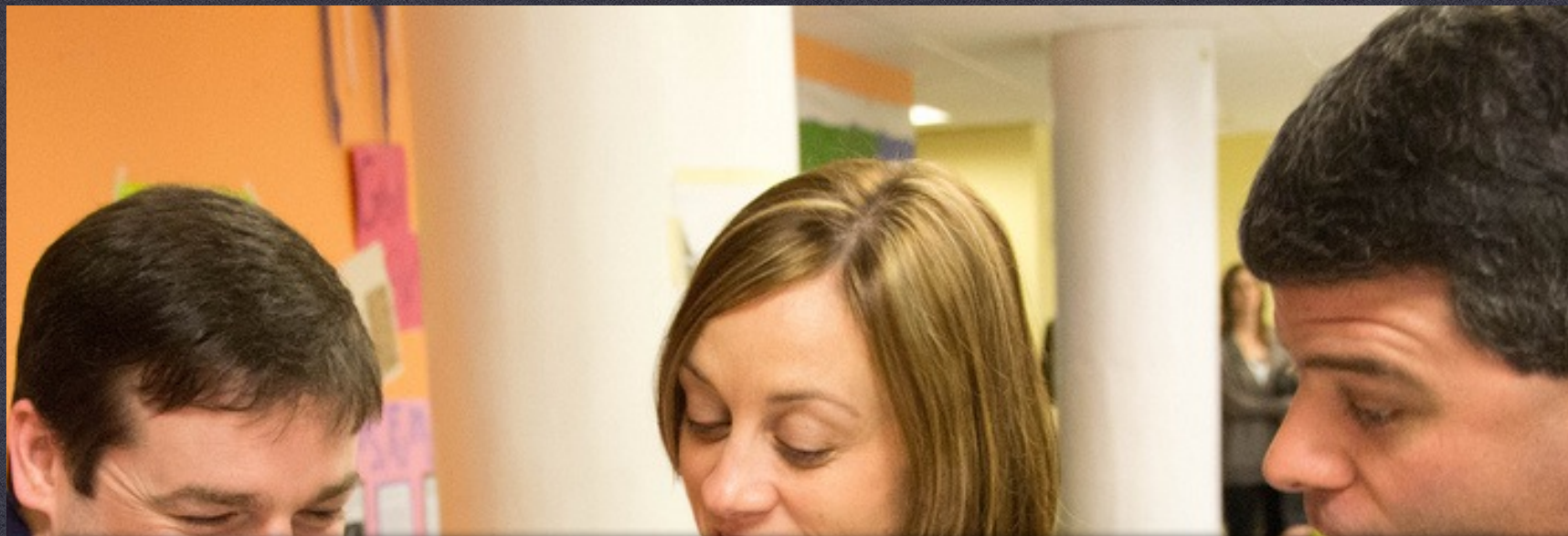


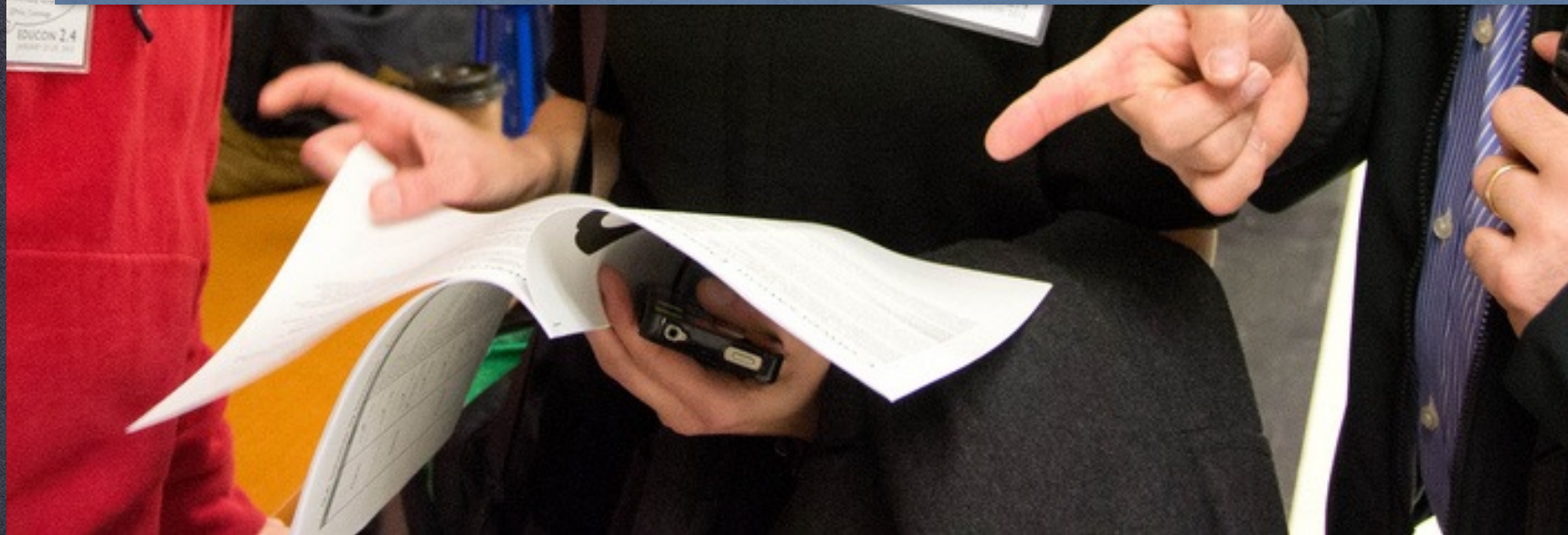
Lyn Hilt
OCTOBER 2014

PROFESSIONAL LEARNING WITH SOCIAL MEDIA



“The power lies in the hearts and minds of the people we connect. Social media just increases that circle of influence further than we could ever imagine.”

via Chris McCaffrey



photos by Kevin Jarrett

IT STARTS WITH **PEOPLE** AND THE **STORIES** THEY SHARE.

Search

TODAY
@todayshow
America's favorite morning show
Studio 1A · <http://today.com>

1,872 TWEETS
7,415 FOLLOWING
1,354,411 FOLLOWERS

Tweets All / No replies

TODAY @todayshow
RT @JulieGee it's raining on the @todayshow plaza...but @pinkwaterproof! #PinkTODAY [instagr.am/p/Pt6qMWqHJ3/](http://instagram.com/p/Pt6qMWqHJ3/)
View photo

TODAY @todayshow
MT @RyanSeacrest with the guys @mlauer and @dickc. What do you think of twitter's redesign? [instagr.am/p/Pt3nigFWZY/](http://instagram.com/p/Pt3nigFWZY/)
View photo



DISCOVER LOG OUT

Hi, STEVE

Current Balance:	\$577.96	VIEW >
Credit Available:	\$4,433.00	
Last Statement Balance:	\$251.85	PAY >
Min. Payment Due 05/19:	\$0.00	
Cashback Bonus Balance:	\$125.72	REDEEM >
Newly Earned:	\$5.70	
Cashback Bonus Offer:		SIGN UP >

home

... pink cotton candy
... brown chocolate

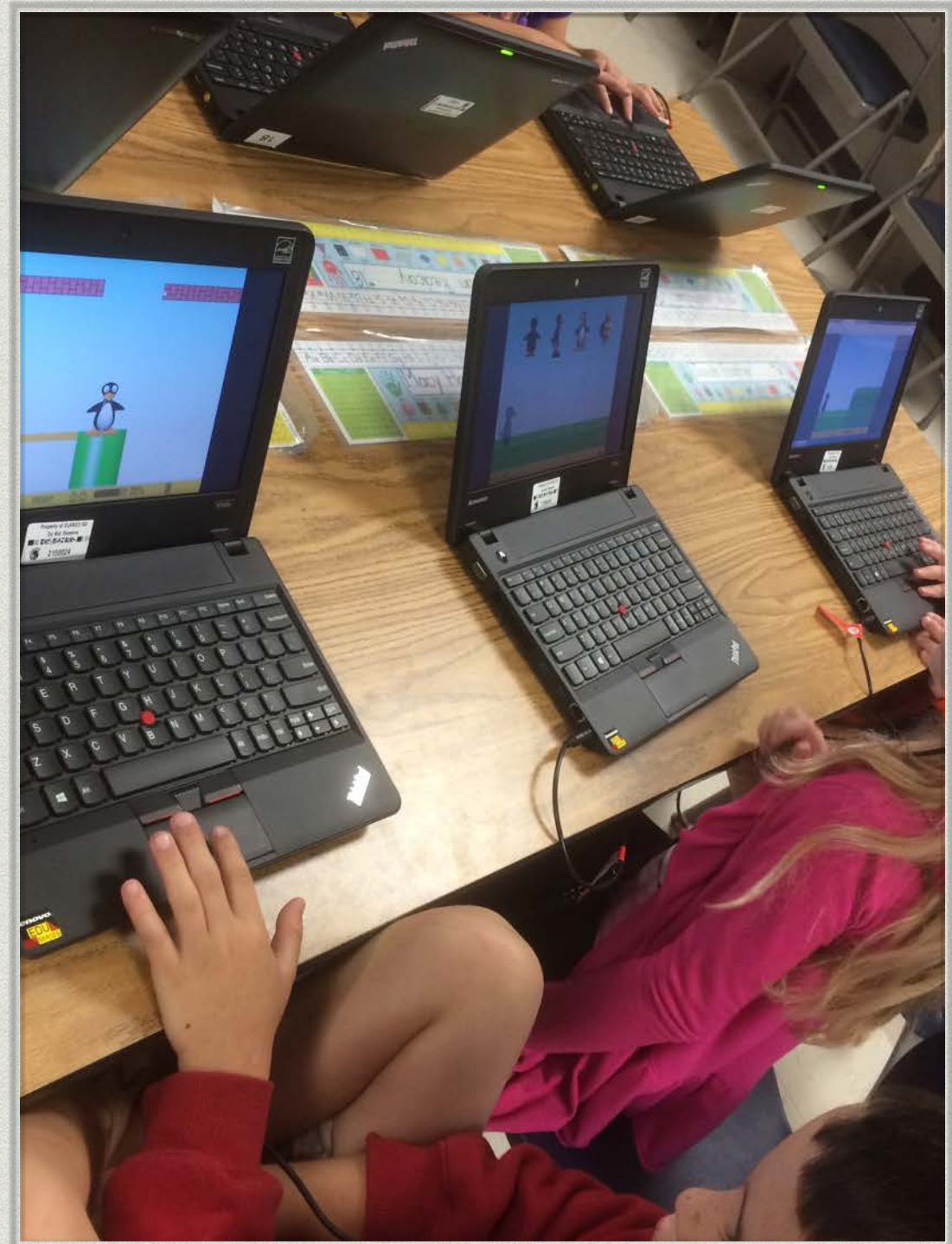
back

MEDIA, MEDIA, EVERYWHERE!

How will you engage?

The Shift

- * Exponential access to information and the need to evaluate critically
- * Digital tools readily available
- * Movement from banning tools to embracing social media
- * The rise of the connected educator



MEANINGFUL PROFESSIONAL DEVELOPMENT IS...

achievable actionable application asweshould brainstorming challenging

collaborative designed **differentiated**

empowering enlighten flexible handson identifiedbymyself inquirybased inspiration intentional

interactive modeled needidentified nopowerpoints **planned** practical provocative

purposeful reflection **reflective** **relevant**

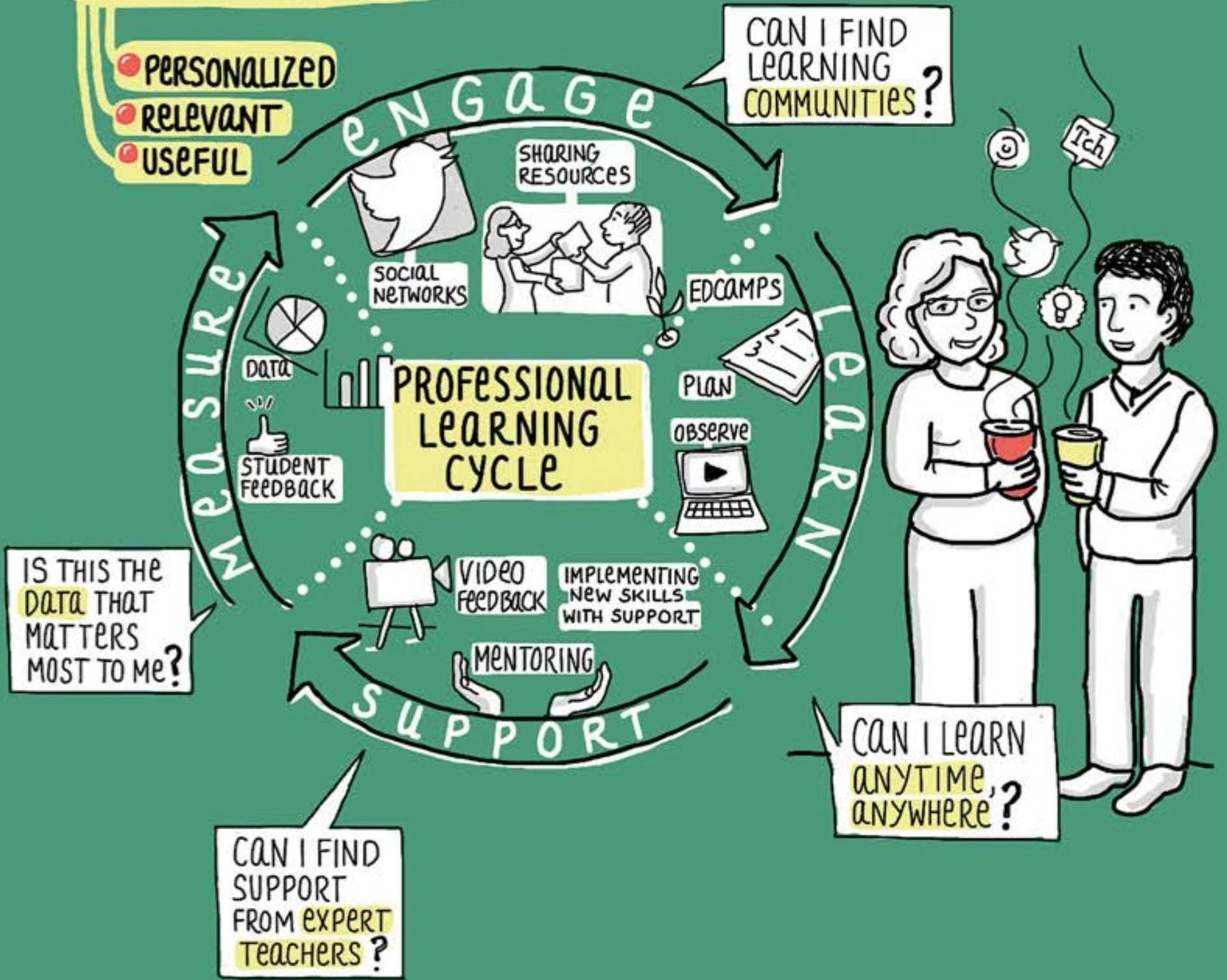
sustained targeted teachersought **time** **timely** **transferable** transform transformation

transformative useful

transformative useful

LEARNING in the New age

- PERSONALIZED
- RELEVANT
- USEFUL



160CHGK2 j
E60W 6XB66L
20110K1

“Technology is rapidly enhancing and extending opportunities for professional learning. It particularly facilitates access to, sharing, construction, and analysis of information to enhance practice. **Technology exponentially increases possibilities for personalizing, differentiating, and deepening learning,** especially for educators who have limited access to on-site professional learning or who are eager to reach beyond the boundaries of their own work setting to join local or global networks to enrich their learning.”

Learning Forward (2012)

Connectivism

**“A learning theory
for the digital age”
-George Siemens**

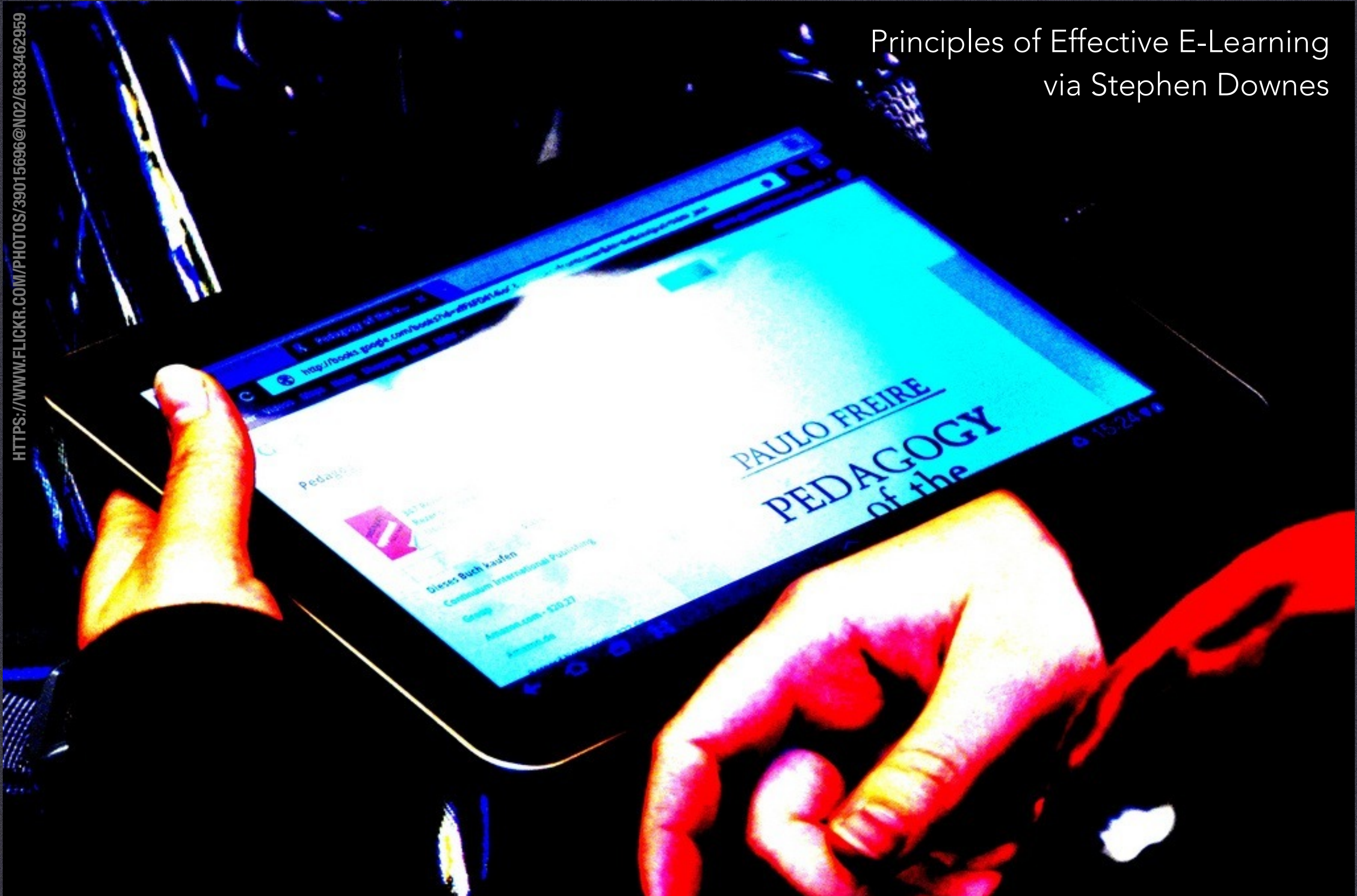
Key principles:

- * Knowledge is networked and distributed.
- * The experience of learning is one of forming new neural, conceptual and external networks.
- * Learning occurs in complex, chaotic, shifting spaces.
- * Our networked experiences are increasingly aided by technology.



<http://www.connectivism.ca/about.htm>

Principles of Effective E-Learning
via Stephen Downes



HTTPS://WWW.FLICKR.COM/PHOTOS/39015696@N02/6383462959

INTERACTION * USABILITY * RELEVANCE

Rhizomatic Learning

“In the rhizomatic model of learning, curriculum is not driven by predefined inputs from experts;

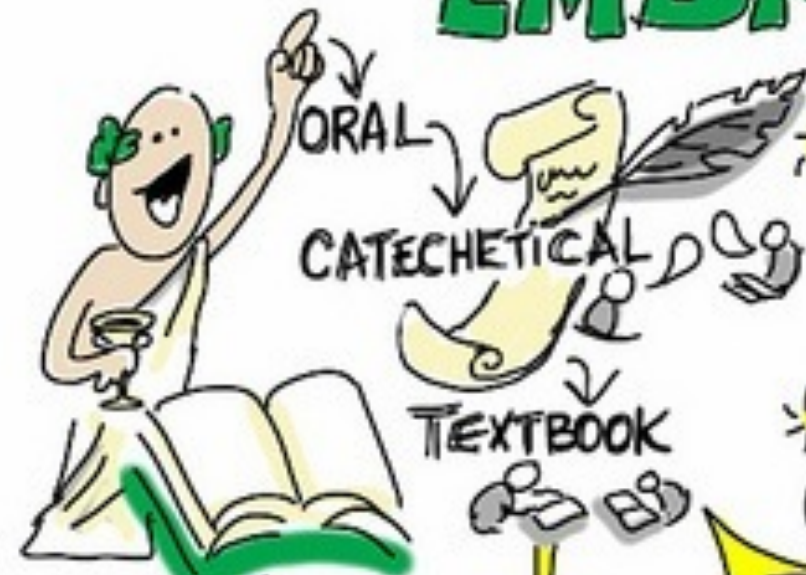
it is constructed and negotiated in real time by the contributions of those engaged in the learning process.

This community acts as the curriculum, spontaneously shaping, constructing, and reconstructing itself and the subject of its learning in the same way that the rhizome responds to changing environmental conditions.”

Dave Cormier (2008)

@davecormier xpu.ca

EMBRACING UNCERTAINTY



Internet happening to Education - @gsiemens



RHIZOMATIC LEARNING



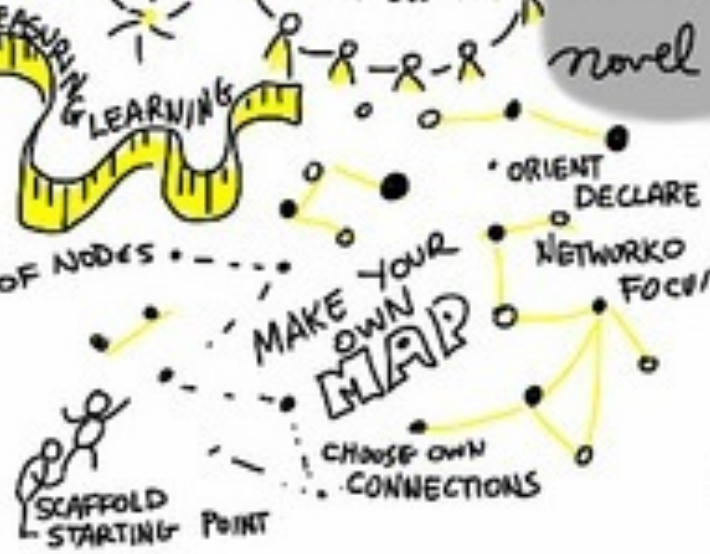
DIGITAL

ACCESS TO IT ALL



RESILIENCE
RESPONSIBLE FOR OWN LEARNING

LEARNER → INDEPENDENT



GIVE UP CERTAINTY

MAY 2013
#CANEDU13
@guliniaforsthe

"GIVE PERMISSION TO THINK"
- @monicahardy

CONNECTED EDUCATORS

WHO ARE WE?

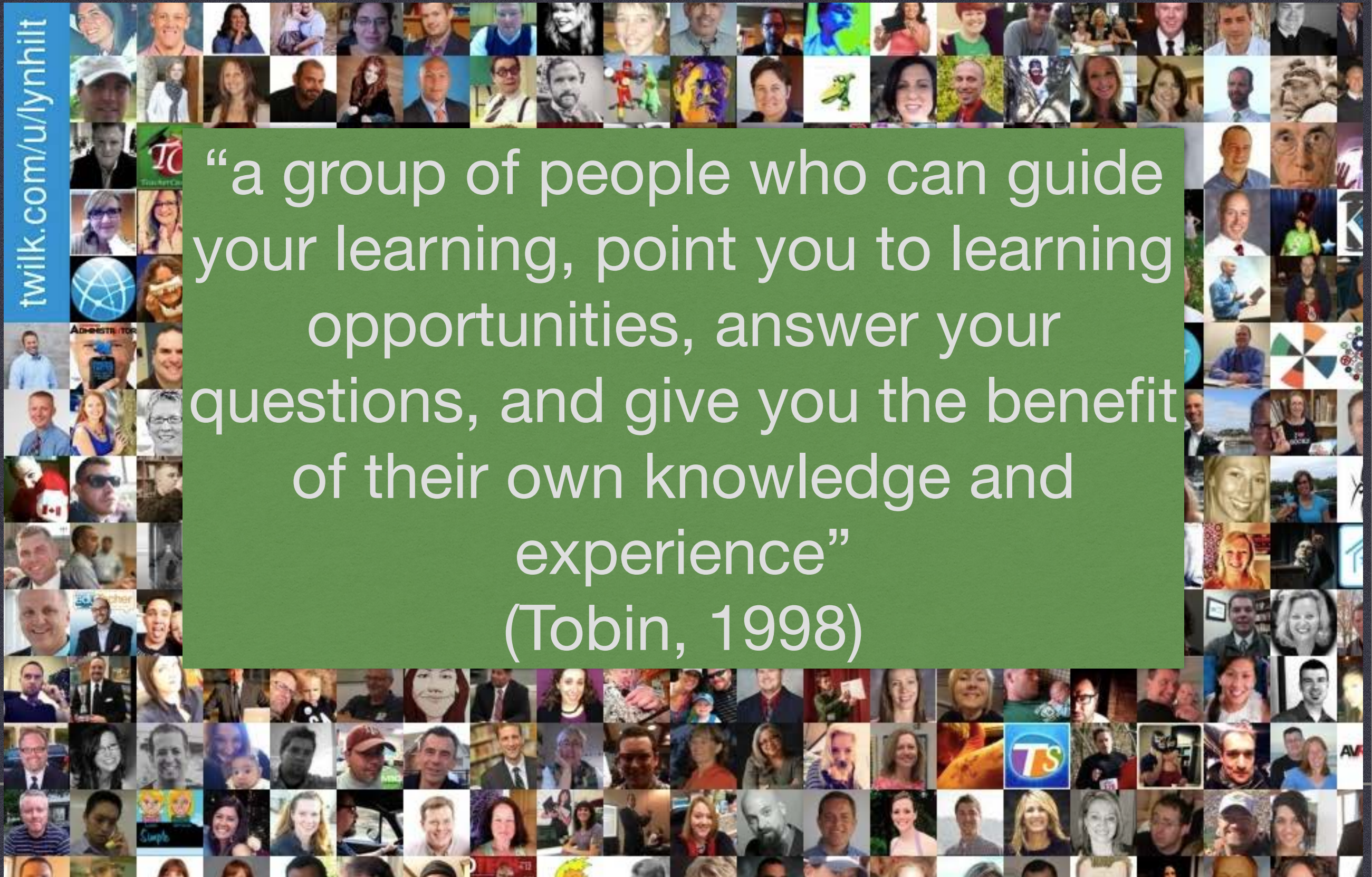
WHAT DO WE DO?

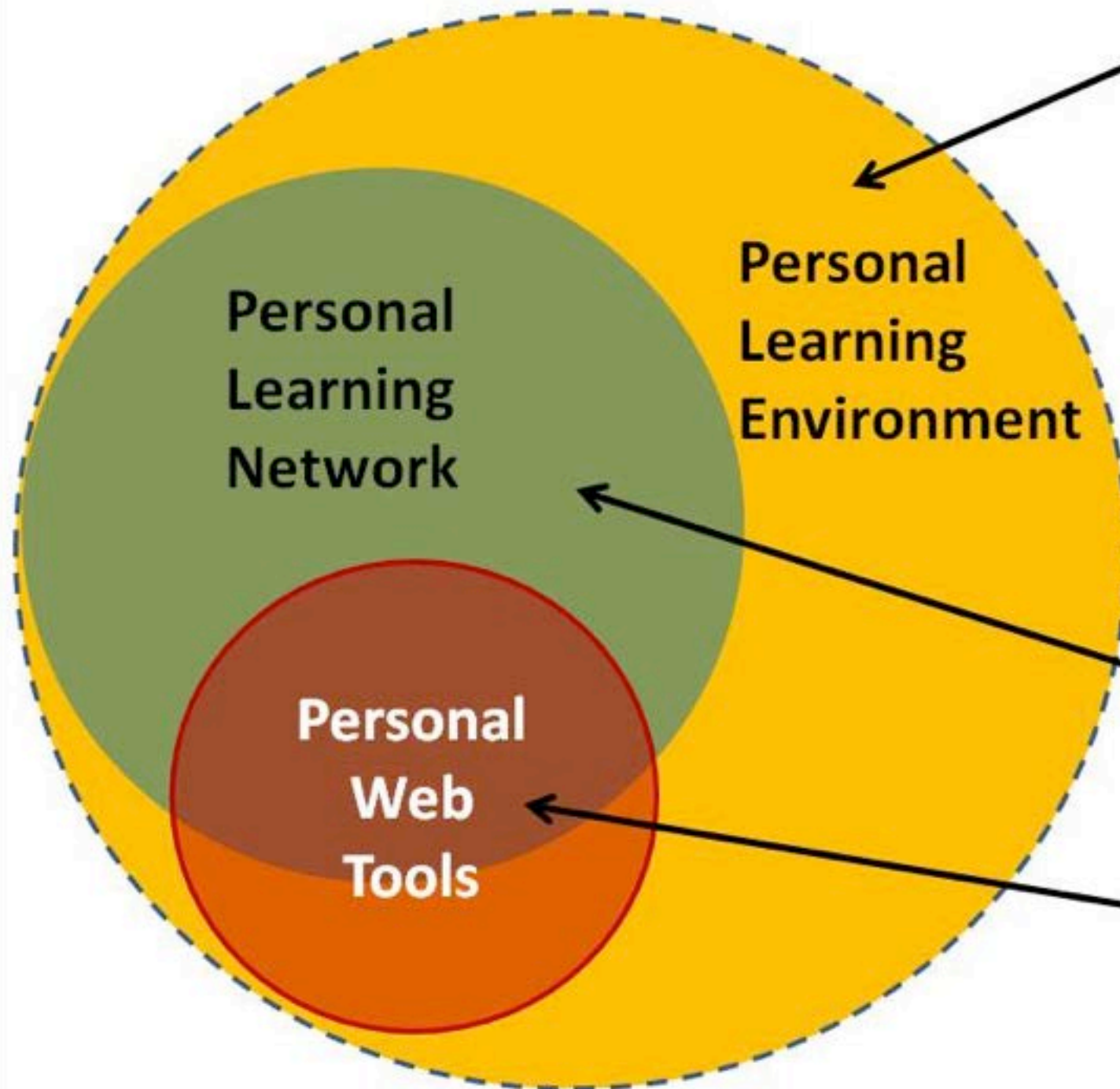


PERSONAL LEARNING NETWORK

twik.com/u/lynhilt

“a group of people who can guide your learning, point you to learning opportunities, answer your questions, and give you the benefit of their own knowledge and experience”
(Tobin, 1998)

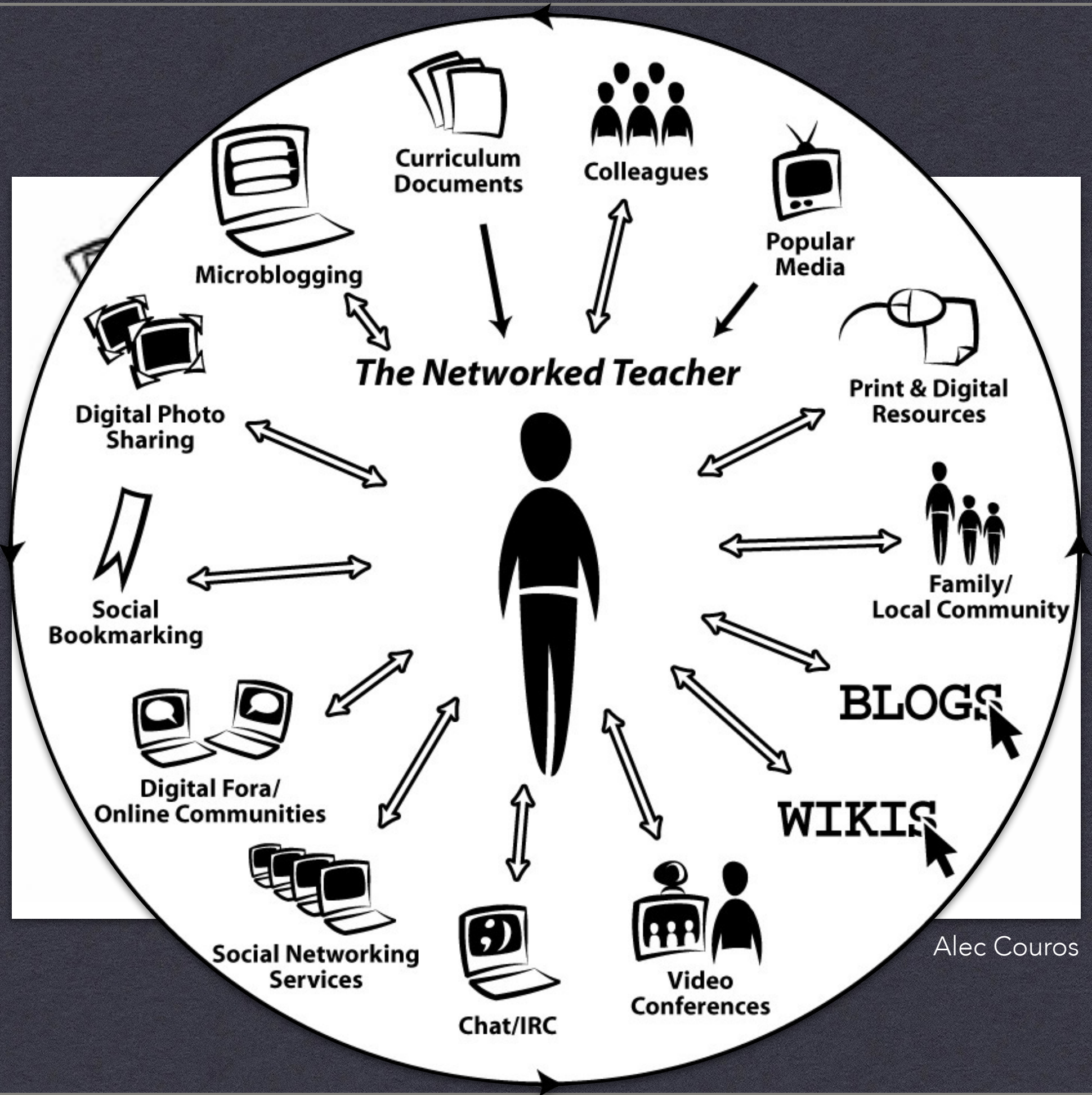




PLEs encompass not only personal web tools (PWTs) and personal learning networks (PLNs) (the people we connect with through our social networks). But PLEs are much wider than this, taking in experiences and realia, as well as learning through TV, music, paper based materials, radio, & more formal contexts.

Learning content is not as important now as knowing where (or who) to connect to, to find it.

PWTs are any web tools, (usually Web 2.0) used by learners to support their lifelong learning.



Alec Couros



continuous learner
wants immediate access to solutions
happy to share
relies on trusted network
learns best with/from others
stays current
strives to improve productivity
thrives on autonomy

Today's Smart Worker
via Jane Hart

CONNECTED Learning

EQUITABLE, SOCIAL, AND PARTICIPATORY

Connected learning is a model of learning that holds out the possibility of reimagining the experience of education in the information age. It draws on the power of today's technology to fuse young people's interests, friendships, and academic achievement through experiences laced with hands-on production, shared purpose, and open networks.

PRODUCTION CENTERED
 Connected learning prizes the learning that comes from **actively producing, creating, experimenting, and designing**, because it promotes skills and dispositions for lifelong learning, and for making meaningful contributions to today's rapidly changing work and social conditions.

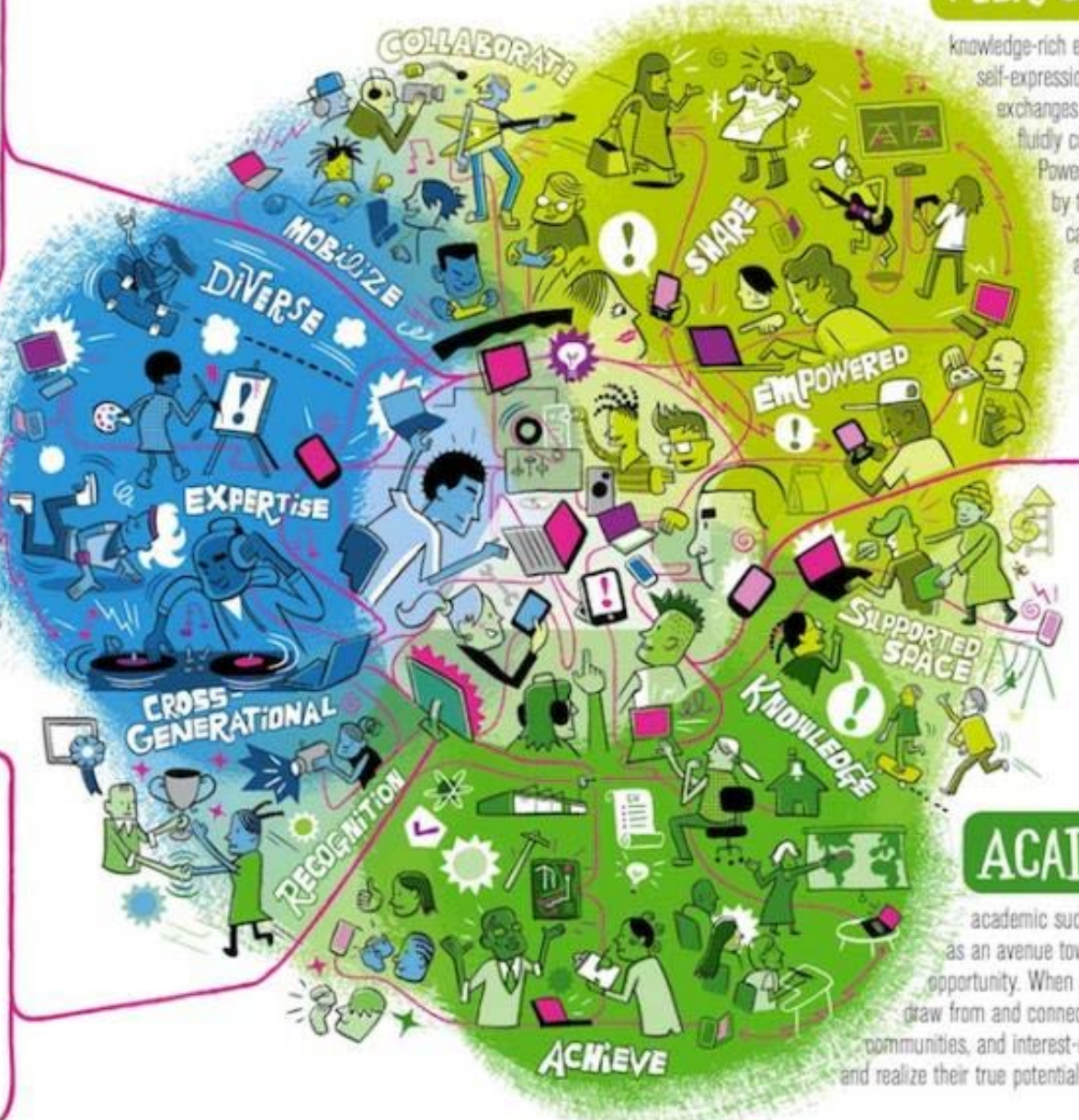
INTERESTS
 Interests foster the drive to gain knowledge and expertise. Research has repeatedly shown that when the topic is personally interesting and relevant, learners achieve much higher-order learning outcomes. Connected learning views interests and passions that are developed in a social context as essential elements.

SHARED PURPOSE
 Today's social media and web-based communities provide unprecedented opportunities for caring adults, teachers, parents, learners, and their peers to share interests and contribute to a common purpose. The potential of **cross-generational learning and connection** unfolds when centered on common goals.

PEER CULTURE
 Connected learning thrives in a socially meaningful and knowledge-rich ecology of ongoing participation, self-expression, and recognition. In their everyday exchanges with peers and friends, young people fluidly contribute, share and give feedback. Powered with possibilities made available by today's social media, this peer culture can produce learning that's engaging and powerful.

OPENLY NETWORKED
 Connected learning environments **link learning in school, home, and community**, because learners achieve best when their learning is reinforced and supported in multiple settings. Online platforms can make learning resources abundant, accessible, and visible across all learner settings.

ACADEMIC
 Connected learning recognizes the importance of academic success for intellectual growth and as an avenue towards economic and political opportunity. When academic studies and institutions draw from and connect to young people's peer culture, communities, and interest-driven pursuits, learners flourish and realize their true potential.

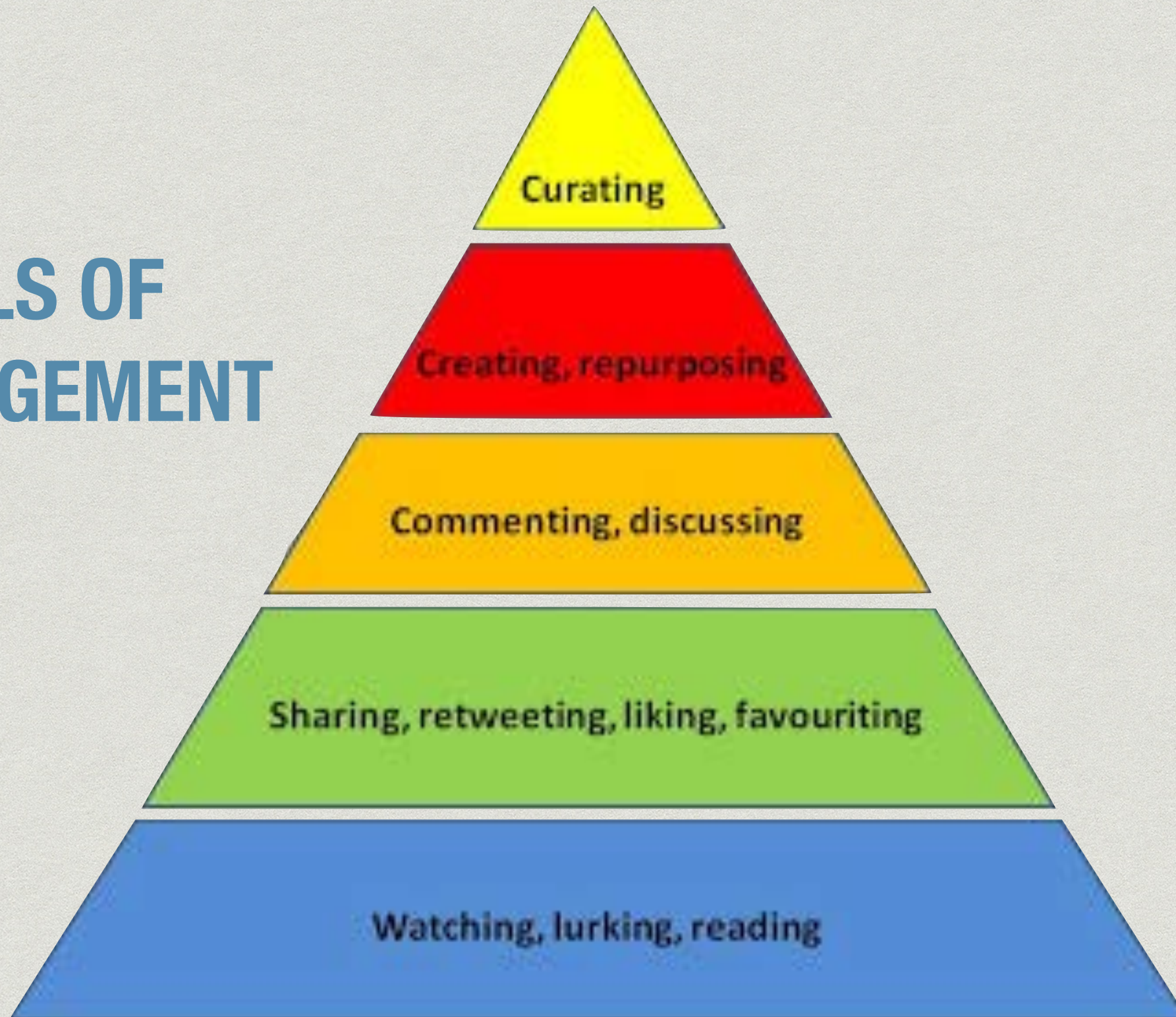


ACTIVE RELEVANT REAL-WORLD EFFECTIVE HANDS-ON
 NETWORKED INNOVATIVE PERSONAL TRANSFORMATIVE

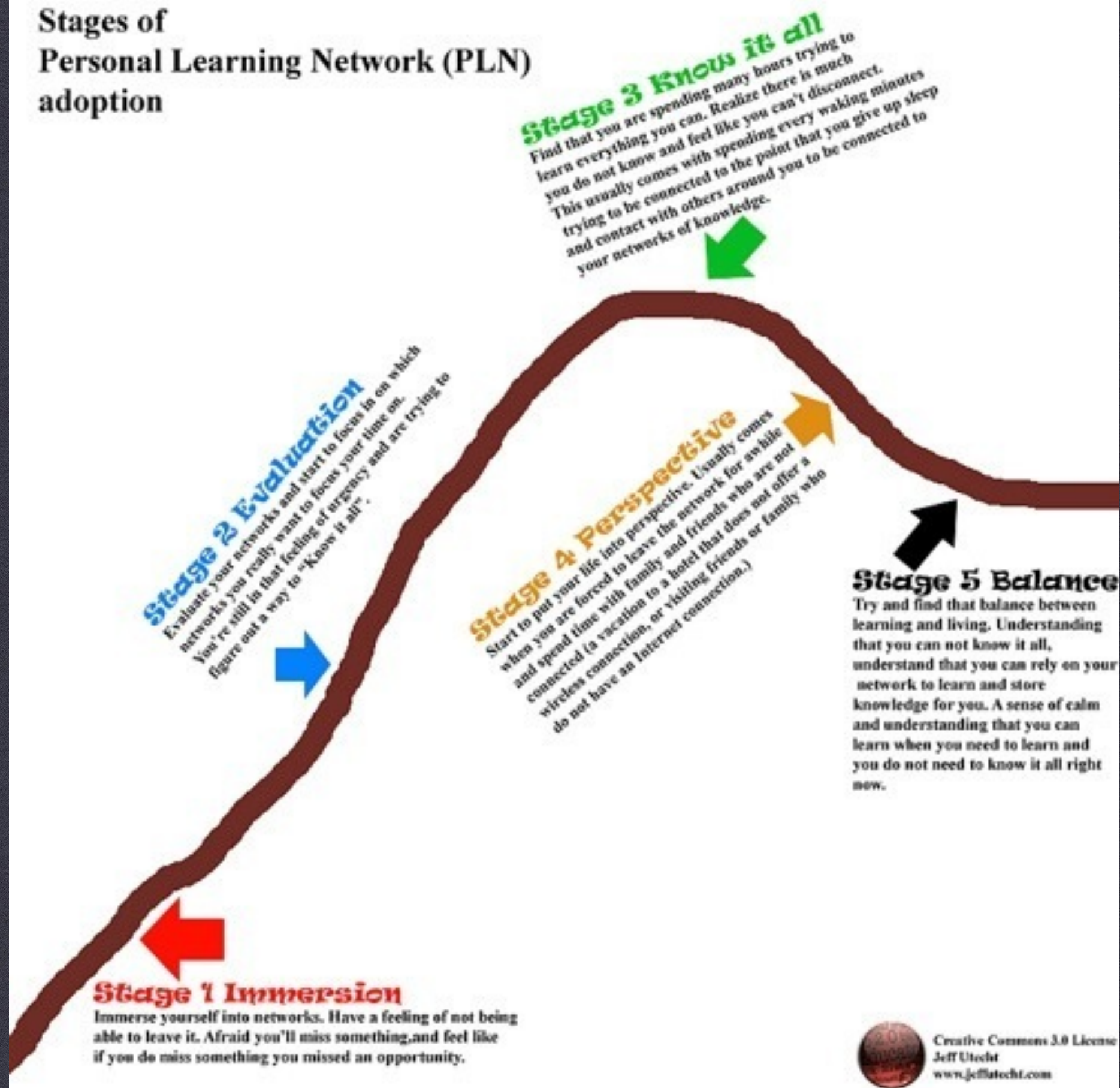
Why social media?

- * Learner first
- * Promotes collaboration and establishes relationships through connections
- * Reflective
- * Timely and relevant
- * Practical and available

LEVELS OF ENGAGEMENT



Stages of Personal Learning Network (PLN) adoption



Creative Commons 3.0 License
Jeff Utecht
www.jeffutecht.com

SEEK, SENSE, SHARE





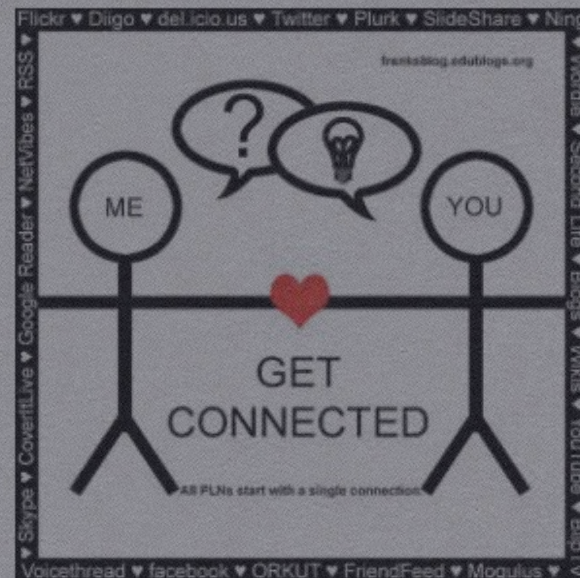
TRANSPARENCY

Learning in Technicolor

Home About Lyn Digital Age Adventures Learn With Me

Effort In = Reward Out

10 SEPTEMBER, 2011 • BY LYN

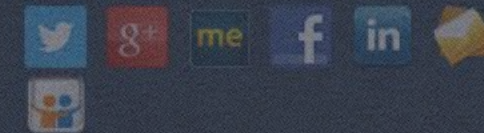


CC licensed photo shared by Flickr user Divergent Learner

In conversations with teachers who are trying to get their administrators “connected,” or with principals newly embarking on the professional learning network journey, these questions always make an appearance: “What is the best way to get started? What tools should I use to connect?”

Almost every time, my instinct begs me to respond, I don’t know. The formulation of a network is a personal

CONNECT WITH LYN



RECENT COMMENTS

First steps at protecting students' privacy. | Connected Principals on First steps at protecting students' privacy.

Lyn Hilt on Blogging for learning.

Dan Winters on Blogging for learning.

Innovation Excellence | 20 Things Educators Need To Know About Digital Literacy Skills

Connected learners gather in learning communities...

- **synchronously and asynchronously**
- **locally and globally**
- **in analog and digital modes**



PROFESSIONAL COMPETENCIES

STUDENTS ARE ENCOURAGED TO **CONNECT** WITH
OTHERS, AND TO **COLLABORATE** AND
CREATE WITH THEM ON A GLOBAL SCALE.

IT'S NOT 'DO YOUR OWN WORK,' SO MUCH AS
'DO WORK WITH OTHERS, AND MAKE IT
WORK THAT MATTERS'.

Will Richardson, *Why School?*



KRISSY VENOSDALE

LET'S GET STARTED!

1. Set learning goals


- * What do you hope to learn?
- * With whom would you like to connect?
- * What direct impact will this have on your professional growth and how will it benefit students?
- * How will you assess the outcomes?

Step 2: Explore!

- * So many tools, so little time!
- * Choose 1-2 tools and strategies that could support your goals.
- * Decide which is the “best fit” for you.
- * Time and commitment required!



Is the tool right for you?

1. Do I understand how this tool allows me to be part of a learning community or network?
 2. Do I have time to commit to using this tool?
 3. Do I have the technology necessary to access the community's resources?
 4. Will the use of this tool help me achieve my learning goals?
- 

ANYTIME, ANYWHERE LEARNING

GROW & NURTURE TEACHER NETWORKS

The screenshot displays the Google+ Hangouts interface. On the left, there are two sections: "Communities you moderate" and "Communities you've joined".

- Communities you moderate:**
 - Instructional Technology Integrators & Coaches:** 1,454 members. The card features a child's face and text about technology requirements.
 - Educators:** 2,510 members. The card shows a classroom scene with a red "31" badge.
- Communities you've joined:**
 - Rhizomatic Learning:** 132 members. The card has a green and white checkered pattern and a red "10" badge.
 - Google Apps for Education:** 29,947 members. The card features the Google logo and a red "99+" badge.
 - Google Apps:** 11,107 members. The card has the Google logo and a red "10" badge.
 - Haiku EDU:** 80 members. The card features a colorful paper airplane icon and a red "2" badge.

On the right, a video call is in progress. The main window shows a man, **Bill Krakower (@wkrakower)**, identified as a "Computer Teacher". A control panel on the left of the video window includes options for "Lower Third" (set to "Red"), "Select logo" (with a file "TeachingisEle... Button.docx" selected), and "Custom Overlay" (set to "OFF"). Below the video window is a "People" section showing thumbnails of other participants in the call.



COMMUNICATE & COLLABORATE



Today'sMeet

Talk. Listen.

Today'sMeet helps you embrace the backchannel and connect with your audience in realtime.

Encourage the room to use the live stream to make comments, ask questions, and use that feedback to tailor your presentation, sharpen your points, and address audience needs.

Create a Room.

Name your room

Delete the room in how long will the room data be saved?

Twitter hashtag Tweets with this hashtag will be pulled into the room.

By submitting this form you agree to the [Privacy Policy](#) and [Terms](#)



Text

Journal/
Diary

hyperlinked

Blog

Intrapersonal

Oral

Classroom
Conversation

Reflection

Platforms

Screencast

Show & Tell

Tutorial

Audio

Interview

soundseeing

Teaching & Learning

and Experiences

network

Twitter

Summarize in
140 characters
or less

Images

Documentation
Photography
Illustration
Memory Trigger

Mindmap

Idea & concept
mapping and
organization

selfie

Video

sightseeing
dubbing

Silvia Rosenthal Tolisano - Langwitches.org/blog

LET'S TAKE A LOOK...

Twitter

Google+ Communities

Blogs and Feedly

Step 3: Engage!

- * Make an engagement plan.
- * Establish a digital presence.
- * Forge connections and build relationships.
- * Contribute!

BUILD A DIGITAL PRESENCE

OWN YOUR "GOOGLED SELF"



lyn hilt



+Lyn



Share



Web

Images

Videos

Shopping

News

More

Search tools



About 300,000 results (0.36 seconds)

Learning in Technicolor | A space to share, reflect, and learn.

lynhilt.com/

Home · About Lyn The Principal's Posts by **Lyn Hilt** is licensed under a Creative Commons Attribution-NonCommercial-NoDerivs 3.0 Unported License.

Lyn Hilt | Connected Principals

connectedprincipals.com/contributors/lyn-hilt

Lyn Hilt is an elementary instructional technology integrator/coach from Pennsylvania. She recently transitioned into this new role after serving as principal of a ...

Lyn Hilt (@lynhilt) | Twitter

<https://twitter.com/lynhilt>

The latest Tweets from **Lyn Hilt (@lynhilt)**. Wife & mommy, elem. instructional tech integrator/coach, former K-6 principal, greyhound lover, connected learner, ...

L_Hilt (@L_Hilt) | Twitter

https://twitter.com/L_Hilt

The latest Tweets from **L_Hilt (@L_Hilt)**: "Долгов напомнил Киеву о международных обязательствах"



From Google Contacts

Only you can see this result

Lyn Hilt

Update your profile

Works at ELANCO SD
Attended Elizabethtown College
Lives in Pennsylvania

Home: lynhilt@gmail.com

Recent posts

Happy birthday +Amber Teamann! Have a beautiful day! #happybirthday
Sep 30, 2014 – Shared privately



Images for lyn hilt

Report images



More images for lyn hilt

CONNECTIONS LEAD TO CONNECTIONS



GLOBAL LEARNING OPPORTUNITIES FOR STUDENTS

OF COURSE

you can't do that

OF COURSE

you have to ask permission first

The Administration



P.S. Please be innovative!

P.S. Please be innovative!



"You shouldn't feel guilty for sharing too much.
But you should feel guilty for
not sharing anything."

-Dean Shareski

Photo by Ben Grey



CONNECTED
EDUCATOR
MONTH

connectededucators.org



CONNECT TO LEARN!

Thank you!

@LYNHILT

LYNHILT@GMAIL.COM

LYNHILT.COM

