

# Powerful Designs For Professional Learning

## SOCIAL MEDIA

October 16, 2014

# Welcome!

Powerful Designs For Professional Learning: Social Media  
October 16, 2014



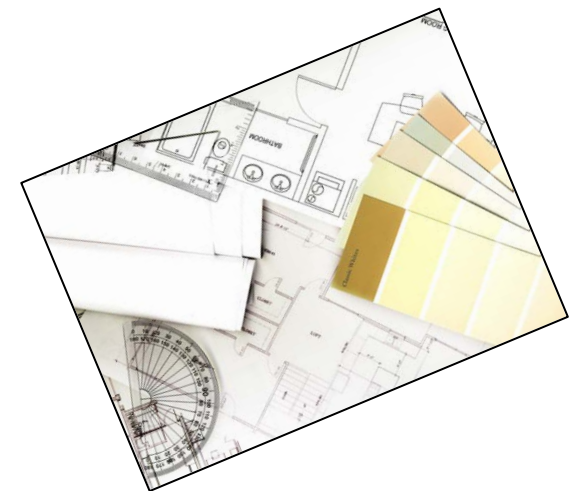
Lois Brown  
Easton



Lyn Hilt

# Today's Essential Questions

1. How can you choose a design that will be effective for professional learning?
2. How can social media help you – and others with whom you work – engage in professional learning?



# Today's Outcomes

1. Know and understand two models for evaluating the effectiveness of professional learning designs.
2. Be able to use questions related to the models to evaluate the effectiveness of professional learning designs.
3. Be able to use social media to engage themselves and others in professional learning.



# Let's Start With The Most Applicable Learning Forward Standard

## Learning Designs Standard:

Professional learning that increases educator effectiveness and results for all students integrates theories, research, and models of human learning to achieve its intended outcomes.



# Your Turn:

## Chat a Six-Word Sentence About the Learning Design Standard

What's most important to you?



The most important thing about the learning design standard is that

\_\_\_\_\_!

# Two Models Related to Design

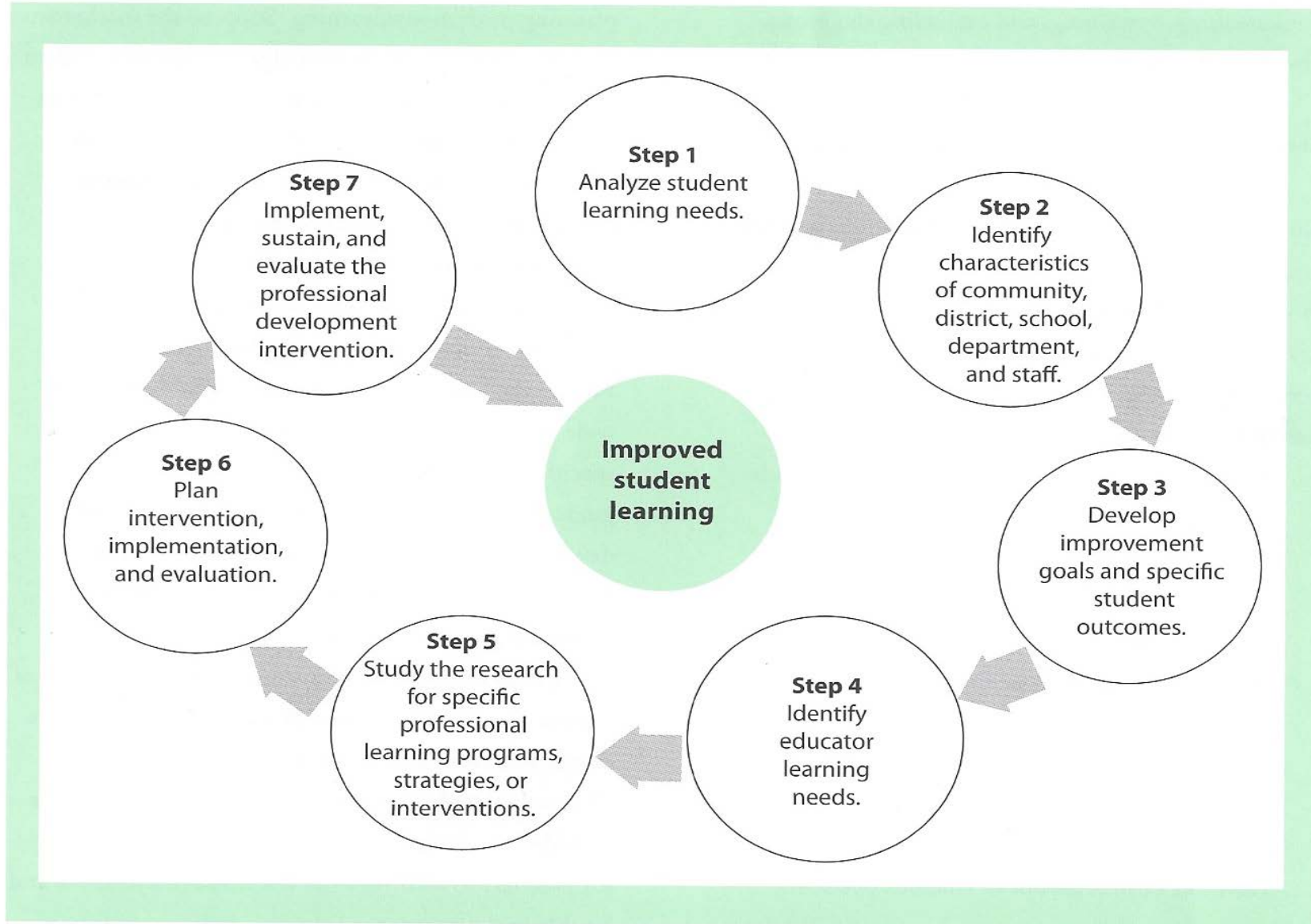
1

The Backmapping Model for Planning Results-Based Professional Learning (from Joellen Killion and Patricia Roy, *Becoming a Learning School*).

2

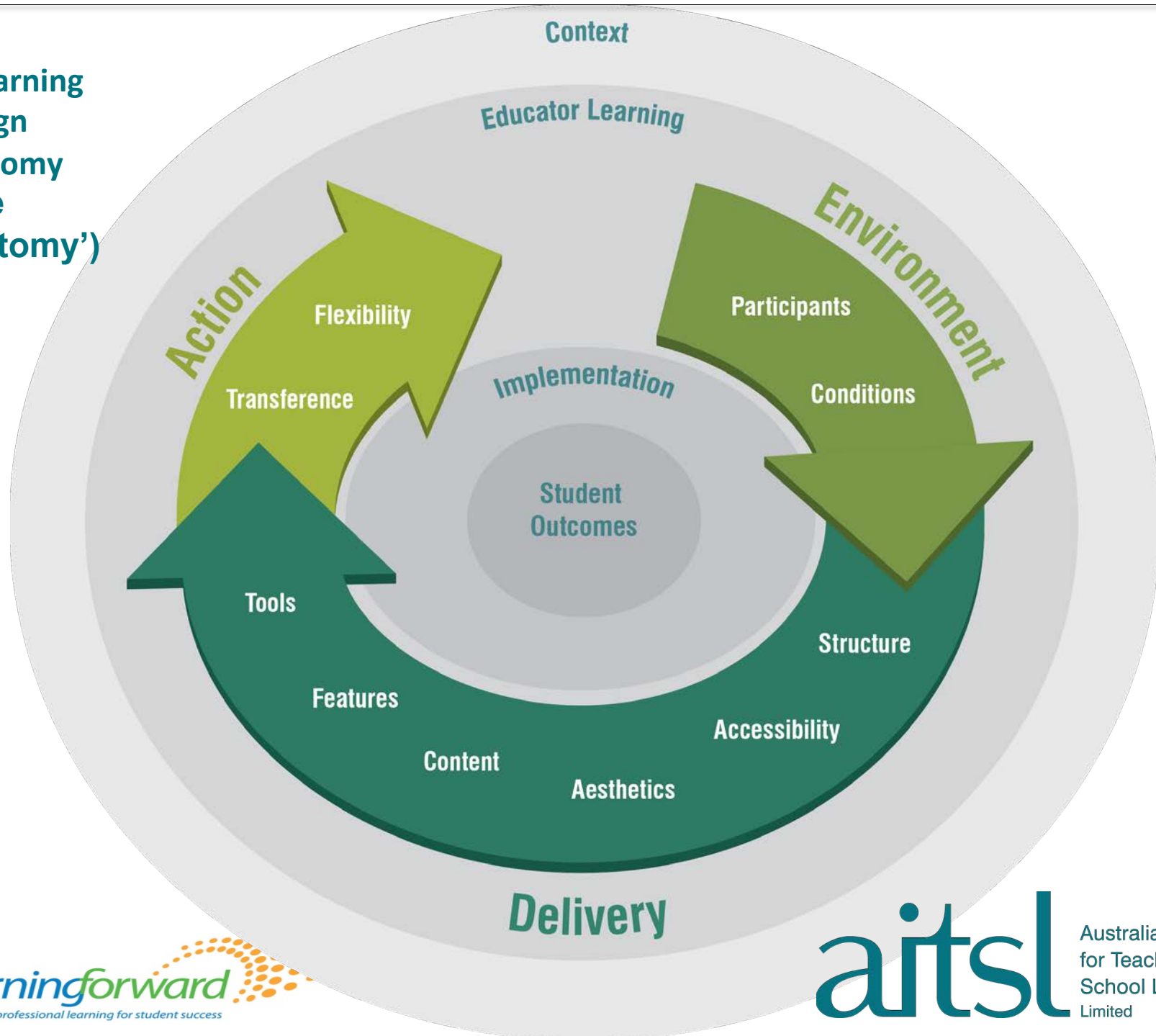
A Learning Design Anatomy (from the Australia Institute for Teaching and School Leadership & Learning Forward, *Designing Professional Learning*).

**Figure 9.1** BACKMAPPING MODEL FOR PLANNING RESULTS-BASED PROFESSIONAL LEARNING





**A Learning Design Anatomy ('the Anatomy')**



# How To Find Out More About the Models

1. Learning Forward Webinar, May 8, 2014
2. Article in *JSD*, “How to Choose the Right Learning Design,” August 2014.
3. *Becoming a Learning School* by Joellen Killion and Patricia Roy.
4. Australia Institute for Teaching and School Leadership (AITSL), [www.aitsl.edu.au/](http://www.aitsl.edu.au/).

# The Models Led to A Set of Questions You Can Use to Choose Designs

## 1. **Why** is professional learning needed?

- Student needs? Adult needs?
- Purposes? Consequences? Expected outcomes?

## 2. **Who** needs to be involved in professional learning?

- Their learning needs?
- Context and conditions for learning?
- Support for learning and implementation of learning?

# Additional Questions

**3. How** will a selected design help the adults accomplish their purposes within their contexts?

Flexibility/rigidity of design? Capable of alternation to suit school/district? Supplementation possible if needed?

- Accessibility (face-to-face, online, or blended, which affects the **when** and **where** of the design)?
- Aesthetic, that is, likely to have a positive effect on participants?
- The right content?
- The appropriate features??
- Great tools for learning

# Final Questions

4. How well does the design encourage action and implementation as a result of learning?

Transfer and application?

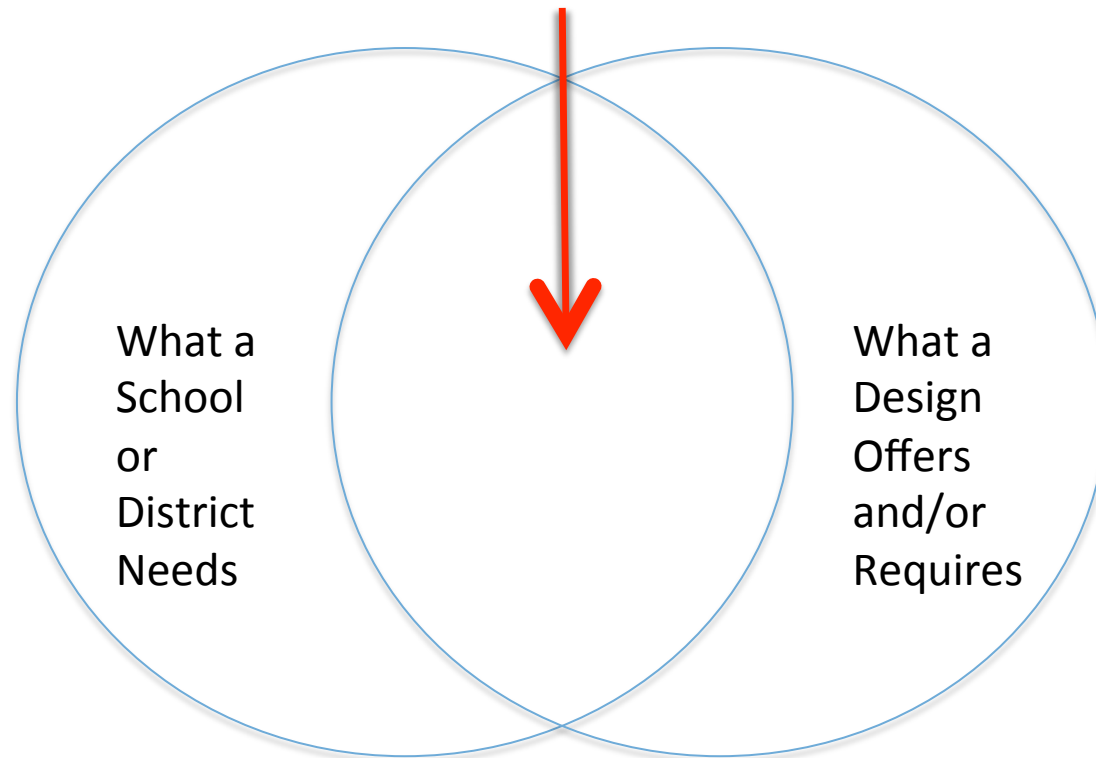
5. How well does the design help participants evaluate their own learning and apply it in new contexts?

Continue to learn?



# The Ideal

An Effective Design



# Use the Questions For

- Selecting an appropriate design or a program of designs that meet needs.
- Deciding how to supplement the design or program of designs to ensure results.
- Reviewing a design or program of designs in place, particularly if outcomes are not being reached.
- Evaluating the effectiveness of a design or program of designs.



# For Today's Webinar:

- Think about these questions in terms of your own context (school or district, for example). Select one or two questions that are most important to you.
- Participate in the next part of this webinar, learning how social media can be used for professional learning.
- Apply what you are learning about social media to your own context.



# What Questions Do You Have?

Chat your questions, and we'll do our best to answer them now.

Or, email Lyn ([lynhilt@gmail.com](mailto:lynhilt@gmail.com)) or me ([leastoners@aol.com](mailto:leastoners@aol.com)).



# Application

1. Recall the questions based on the two models.
2. Think about your own setting.
3. How well does the design help educators meet their needs for professional learning? How well does the design help educators meet the needs of students?
4. What fits without modification?
5. What might need to be modified or supplemented through district/school resources?



# Closure

What is one thing you'd like to do in your setting as a result of this webinar?

Please chat your answers.

