

Technology Norms

- Audio will begin streaming over your computer five minutes before we are scheduled to begin.
- Ask questions/make comments in chat area.
- Close out other programs running on your machine.



learningforward

Monitoring Implementation of Standards-Based Professional Learning

Transforming Professional Learning Webinar Series

Facilitator: Mike Murphy

May 15, 2014



learningforward

Principals

Assistant Principals

Instructional Coaches

District Supervisors

Professional Learning Specialists

University Instructors

Consultants

State Department

School Board

Other Key Support


Teacher Leaders

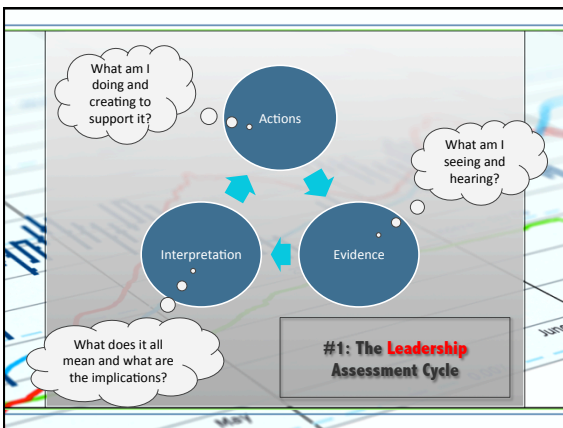
"Who's in our virtual room?"

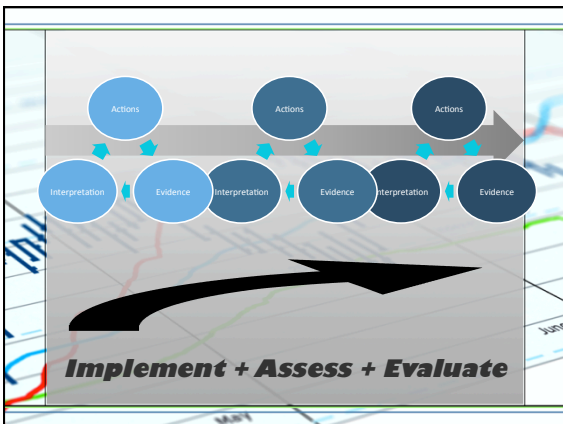
learningforward

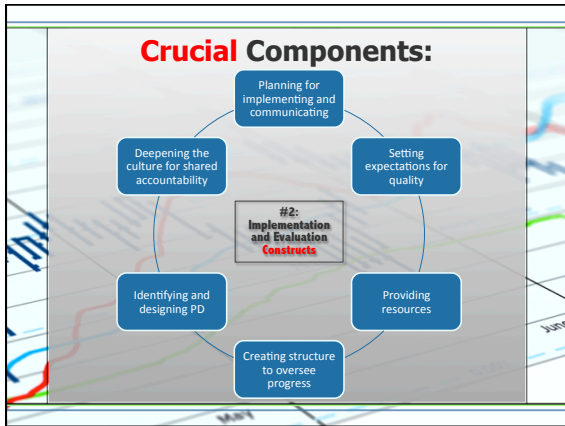
Today's Takeaways:

- 1 Use the leadership assessment cycle
- 2 Know the implementation/evaluation constructs
- 3 Incorporate the levels of evaluation
- 4 Be aware of three tools
- 5 Reflect and commit







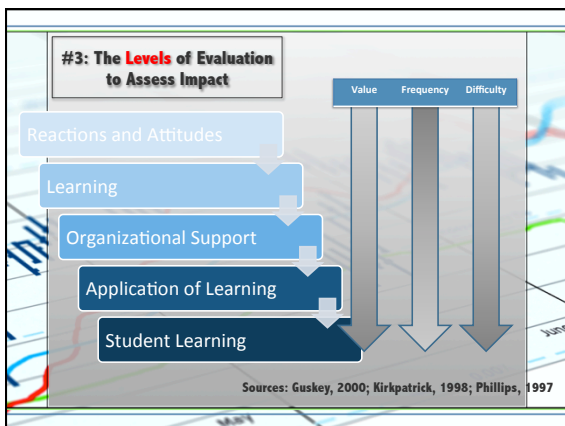


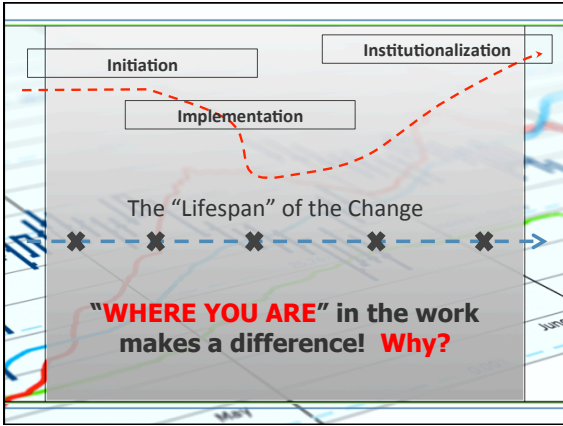
Pause & Refresh . . .

Think about the two ideas we have discussed so far:

1. *The leadership assessment cycle*
2. *Implementation and evaluation constructs*

- Which of the two ideas would you want to explore and why?
- What puzzles you?





Highly Disagree Highly Agree

Was This Assessment Useful?

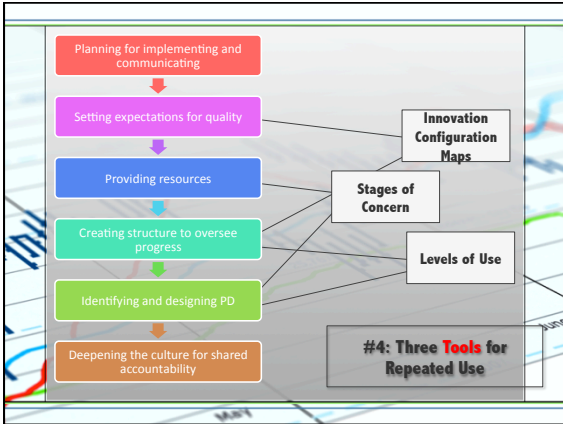
Question:	Low High					Avg.
	1	2	3	4	5	
I now have a much clearer overall understanding of the intent of the Common Core State Standards.	///	///	///	///	///	3.26
I have a greater awareness of the Common Core State Standards in my teaching area.	/	///	///	///	///	3.48
I feel confident to go back to my classroom and begin writing lesson plans using the Common Core State Standards as my guide.	///	///	///	///	///	2.48

◆ This short survey was given right after initial training on the CCSS. Appropriate and useful?

◆ How do the results "fit" with the leader's assessment cycle? Why?

#4: Three Tools for Repeated Use

Innovation Configuration Maps	Stages of Concern	Levels of Use
A graphic illustration of the range of implementation of the new practices. IC Maps are useful for self-assessment and coaching, as well as creating a "snapshot" of the state of implementation at a given moment.	Most useful through the one-legged interview, the process involves the identification of the participant's attitudes, concerns, and beliefs about an innovation. The SoC is particularly useful to address interventions	The interview tool that is used to determine participants' behaviors toward the implementation of a particular innovation. The LoU can be used to design ongoing efforts for collaboration and PD to move into more sophisticated levels of use of the innovation.



learningforward

Pause & Question . . .

Look at the three tools and their recommended use.

- What questions do you have about any of the three?
- Do you already see a great use for one of them?

TAKE ACTION

- Use the leadership/assessment cycle?
- Know the implementation/evaluation constructs?
- Incorporate the levels of evaluation?
- Be aware of three tools?

#5: Reflect and Commit!

For more detail on these ideas . . .

- For more information on the leadership assessment cycle, review *Orchestrating School Change: Transforming Your Leadership* (Murphy, 2014)
- Interested in the Levels of Evaluation?
 - Resources will be included in post-session email
- Need more information about the tools?
 - IC Maps = Learning Forward Website – Standards Section
 - Stages of Concern = SEDL website
 - Levels of Use = SEDL website

Thank You!

